

On The Tracks

Open Rail/Signal Line/Fast Lane

SPECIFICATION

| | |
|----------------------------------|--|
| Construction | Tufted Loop |
| Face Fiber | 100% Milliken-Certified Nylon |
| Tile Size | 25cm x 100cm |
| Dye Method | Solution Dyed |
| Gauge | 1/10 |
| Stitches | 11.2 |
| Standard Backing | PVC-Free WellBAC™ Function Available with TractionBack® |
| Recyclability | 100% |
| Recycled Content By Total Weight | 40% (37% Post Industrial, 3% Post Consumer) |
| Nominal Total Thickness | 5.5mm±10% |

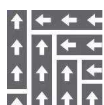
PERFORMANCE

| | |
|--|---|
| Flammability (Radiant Panel ASTM-E-648) | ≥ 0.45 (Class I) |
| Smoke Density (NFPA-258-T or ASTM-E-662) | ≤ 450 |
| Methenamine Pill Test (CPSC FF-1-70 or ASTM D 2859) | Self-Extinguishing |
| Lightfastness (AATCC 16E) | ≥ 4.0 at 80 Hours |
| Crocking (AATCC 165) | ≥ 4.0 Wet or Dry |
| Static Electricity (AATCC-134) 20% R.H., 70° F. | ≤ 3.5 KV, Permanent Conductive Fiber |
| Texture Appearance Retention Rating (TARR) | Heavy |
| Indoor Air Quality—CRI Green Label Plus™ | GLP3200, Carpet Category 14X |

WARRANTIES

| |
|-----------------------------------|
| Lifetime Face Fiber Wear |
| Lifetime Antistatic |
| Lifetime Floor Compatibility |
| Lifetime Color Pattern Permanency |
| Lifetime Floor Release |
| Lifetime Moisture Resistance |
| Lifetime Delamination of Backing |
| Lifetime Dimensional Stability |
| Lifetime Tuft Bind |
| Lifetime Edge Ravel |
| Lifetime Flammability |

INSTALLATION METHOD



Plank

3RD PARTY CERTIFICATES



Declare.



Design Copyright – Milliken & Company.

This carpet tile product is covered by one or more patents, published applications and/or patents pending. Specifications are subject to normal manufacturing tolerances and may be changed without prior notice. Copies of actual test results are available upon request.

Customer Service 8621 61455588 | millikencarpet.com

© 2020 Milliken & Company | Made in China