



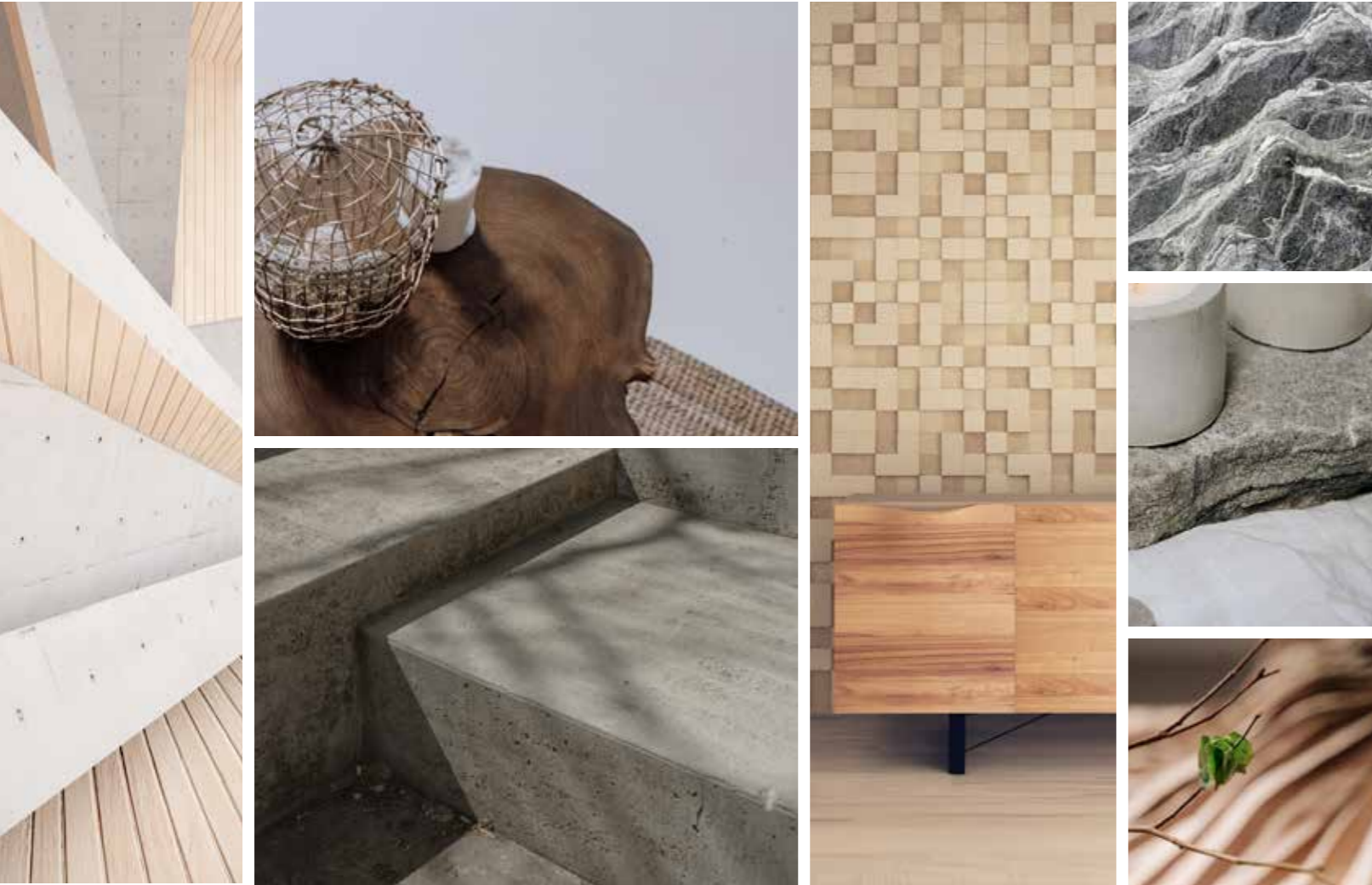
MIXED FORMATIONS
FLEXFORM™ LVT

Milliken®

MIXED FORMATIONS

Made of Wood

Made of Stone



A peaceful land between home and office. The Mixed Formations Collection is a combination of natural surfaces from the outside environment. There are 4 wood patterns and 5 stone textures, in a variety of dimensional tones. We invite you to discover our approach to creating a healing environment through natural textures.

SIZE:

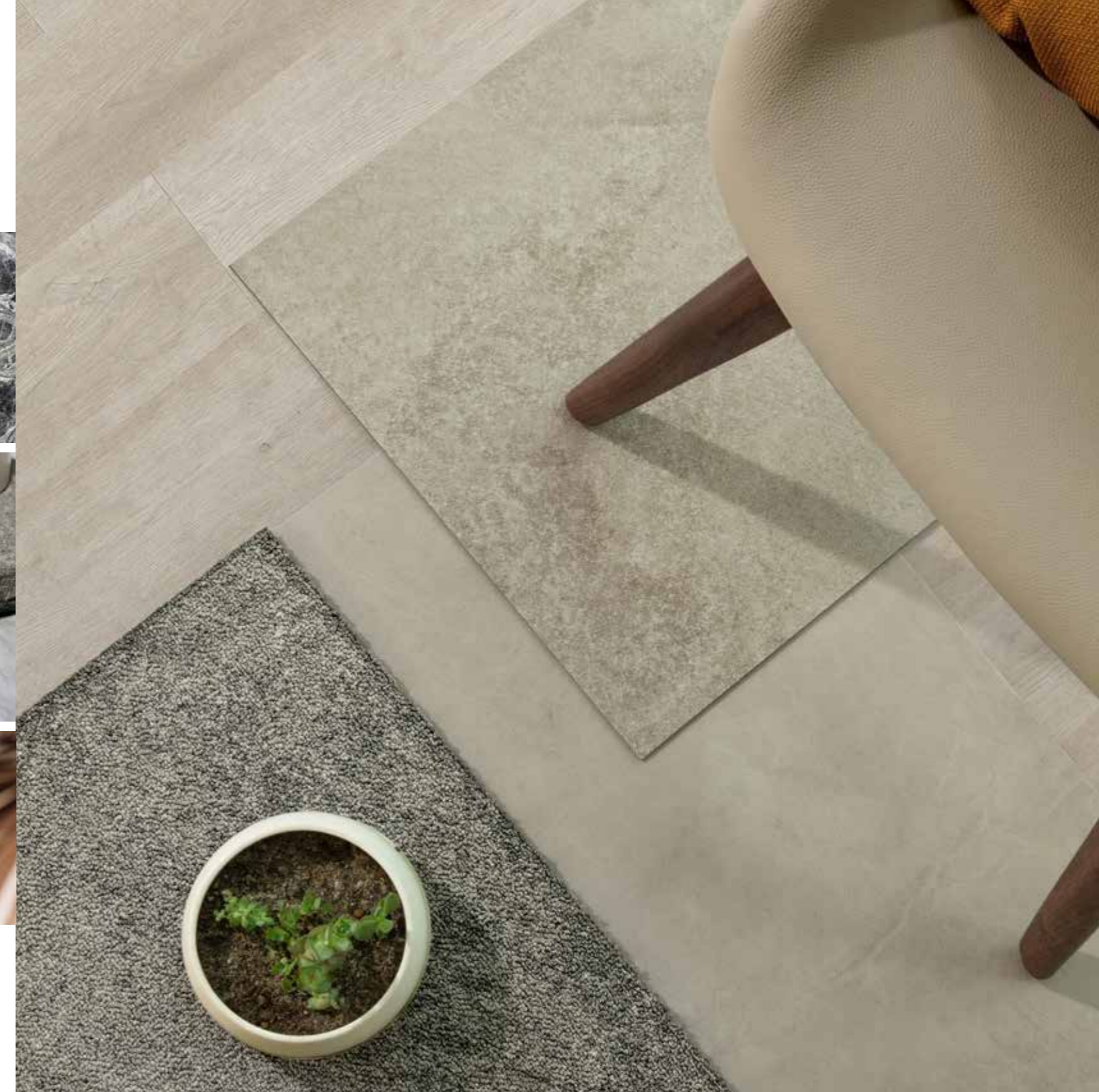
Made of Wood -

7.25" x 48" (184.15mm x 1219.2mm)

9" x 60" (228.6mm x 1524mm) (Gunnison only)

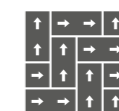
Made of Stone -

18" x 36" (457.2mm x 914.4mm)

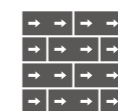


(Up to down) High Alignment in Khaki, Dust Crystals in Shell, Pure Slab in Dove, Laid Bare in Sand (Comfortable Concrete)

INSTALLATION METHODS



Herringbone



Ashlar



Vertical Ashlar



GOLDEN OAK
GDK259 Taupe



Gunnison
Left



Gunnison
Right



Mixed Formations

Made of Wood

- Gunnison
- Soft Alignment
- High Alignment
- Golden Oak

Gunnison has a left and right tile repeat, that undulates together to form a herringbone installation effect. The pattern carries various different wood textures, emulating a complex wood installation.



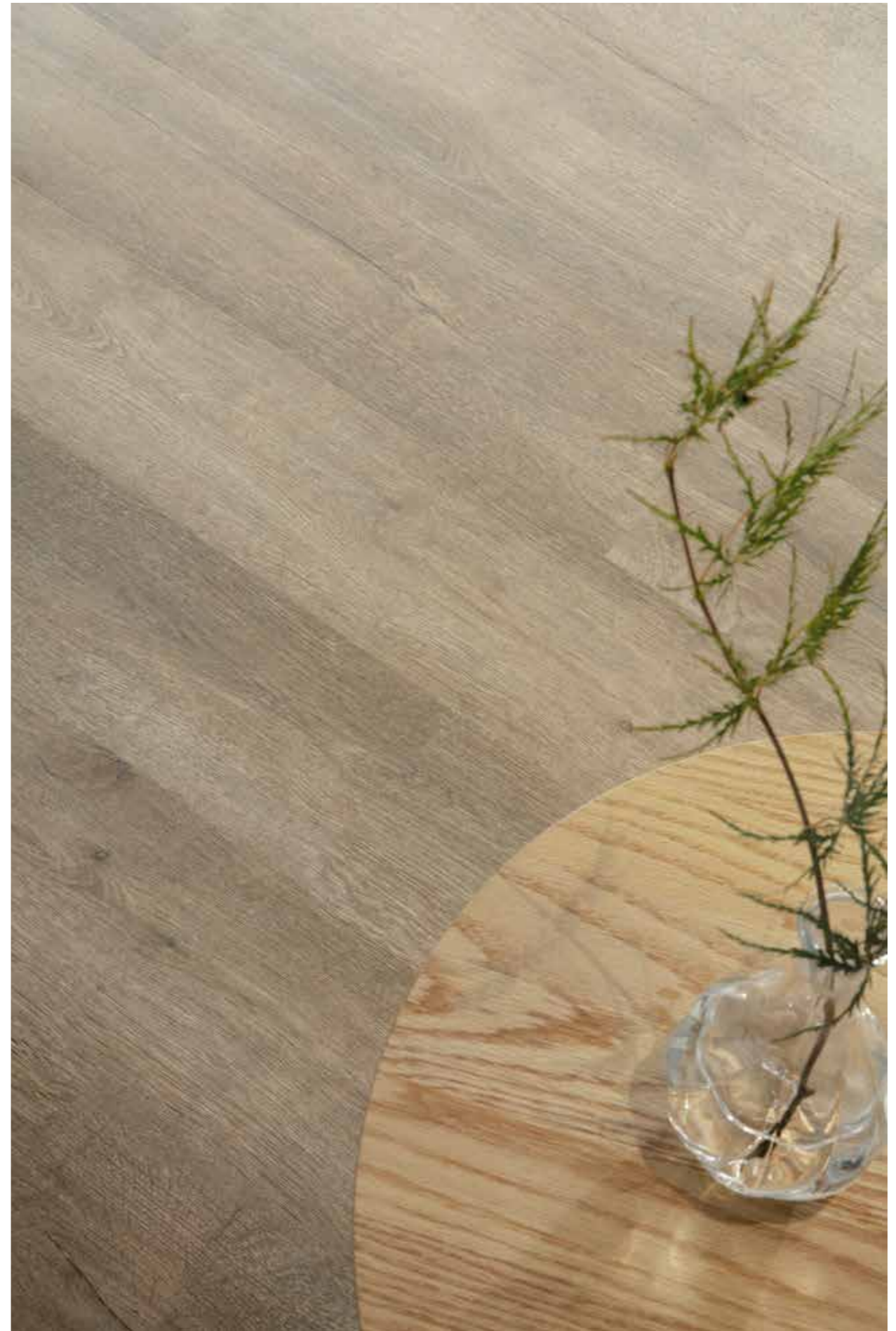
SOFT ALIGNMENT
SAL219 Cream



Soft Alignment in *Cream*, ashlar installation

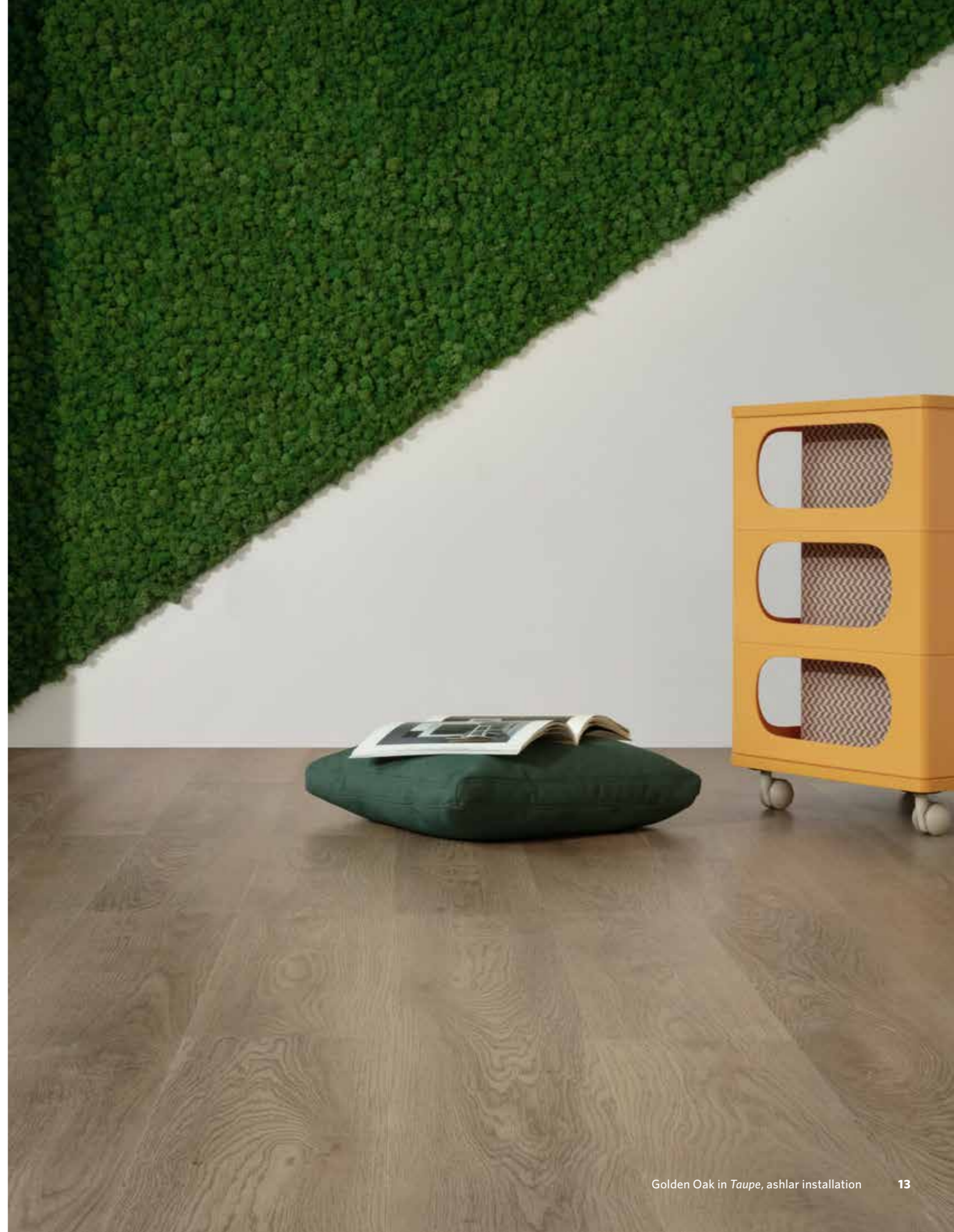
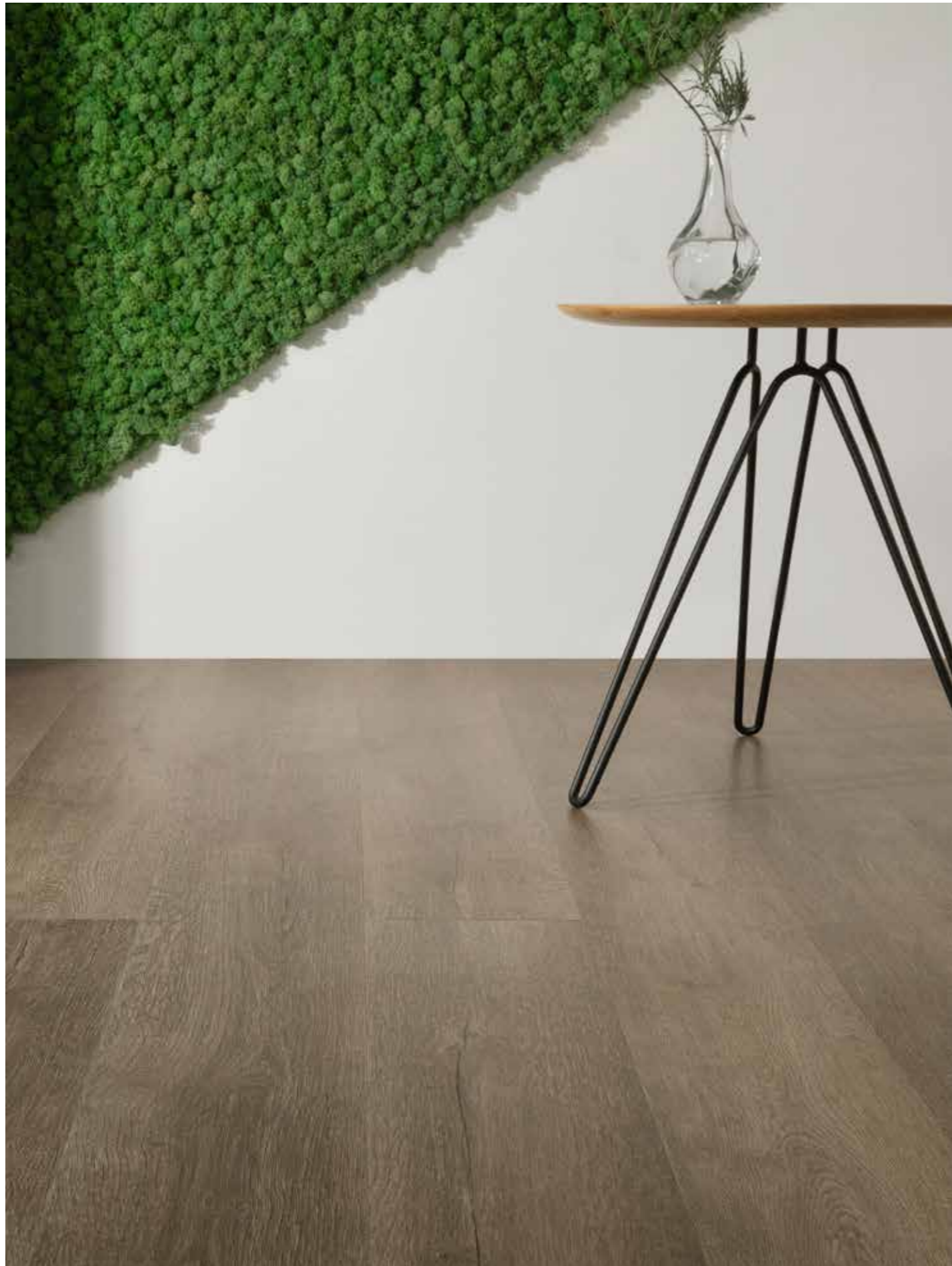


HIGH ALIGNMENT
HAT220 Khaki



High Alignment in *Khaki*, ashlar installation





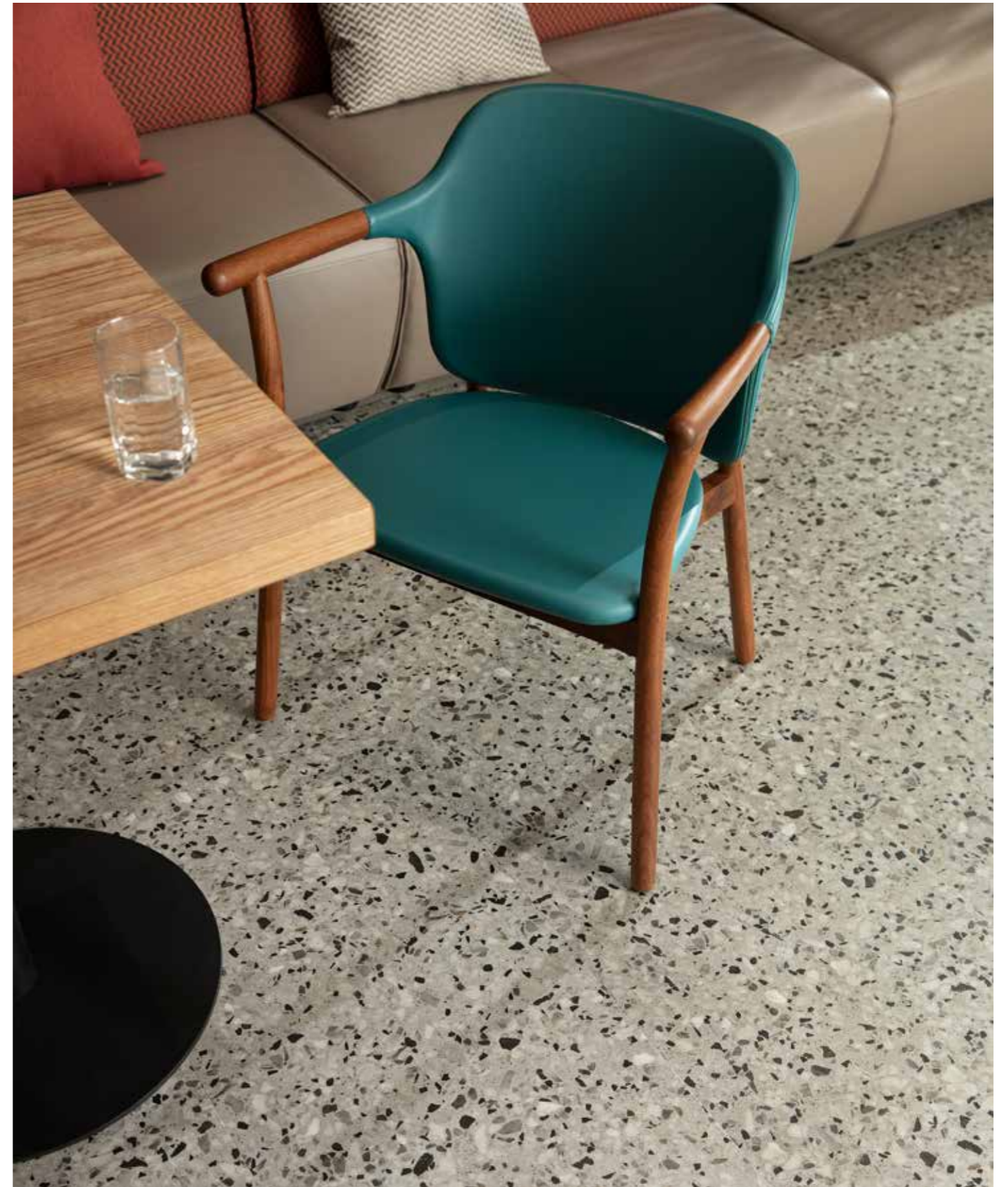


14 (Left to right) Pure Slab in Dove, Gunnison in *Tan*, ashlar installation

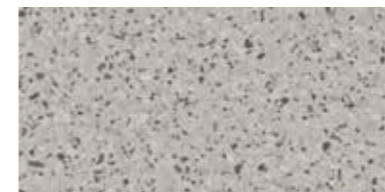


Golden Oak in *Tan*, Soft Alignment in *Dark Beige*, High Alignment in *Honey*, ashlar installation 15





Open Fragments in Chrome, ashlar installation



OPEN FRAGMENTS
OPF250-217 Chrome

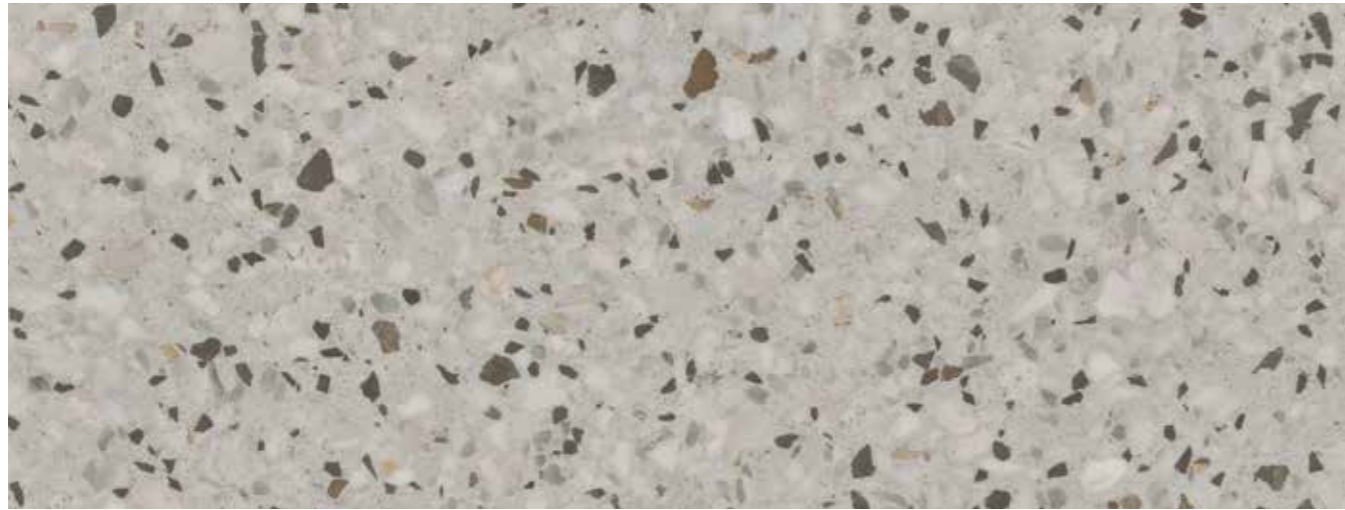
Mixed Formations

Made of Stone

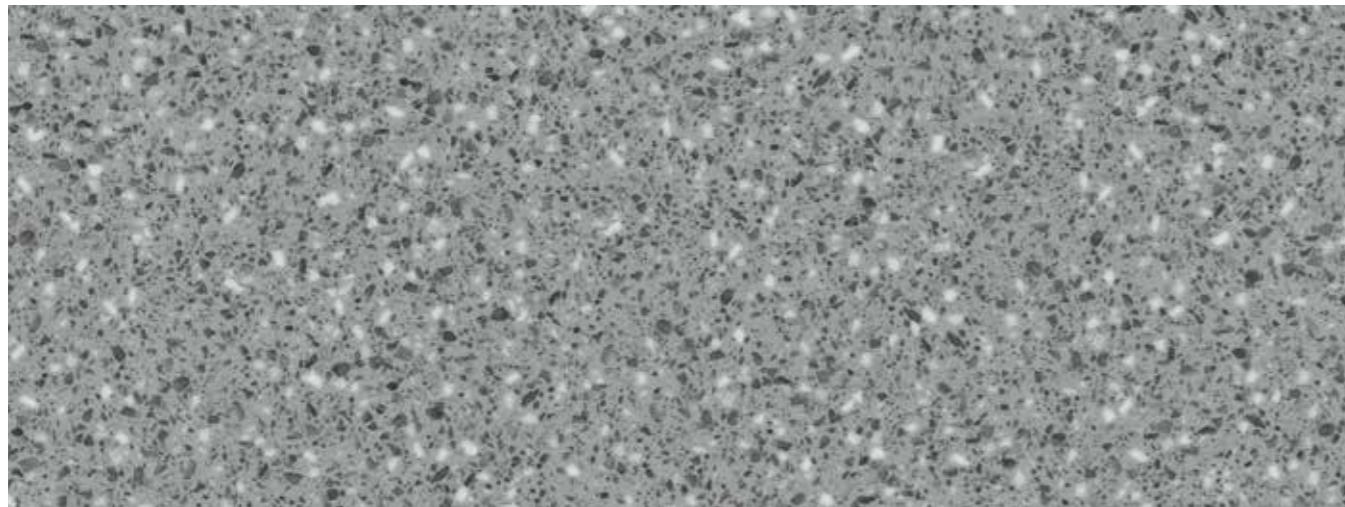
The 5 stone patterns has a progression of natural stone textures. Open Fragments and Close Fragments are larger Composite Stones, while Pure Slab, Fine Grain and Dust Crystals illustrate finer grain stones.

The irregularity design of the granular elements, allow the joint to be concealed, creating continuous surface environments.

OPEN FRAGMENTS/Chrome



CLOSE FRAGMENTS/Silver



PURE SLAB/Cloud



FINE GRAIN/Platinum



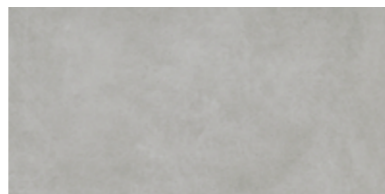
DUST CRYSTALS/Dusk





Pure Slab in *Taupe*, ashlar installation

PURE SLAB
PSL217 Taupe



Dust Crystals in *Dusk*, ashlar installation

DUST CRYSTALS
DSC250 Dusk





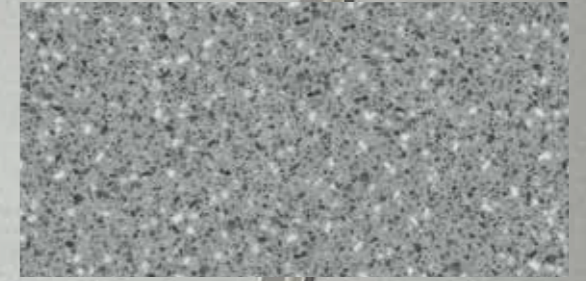
Open Fragments



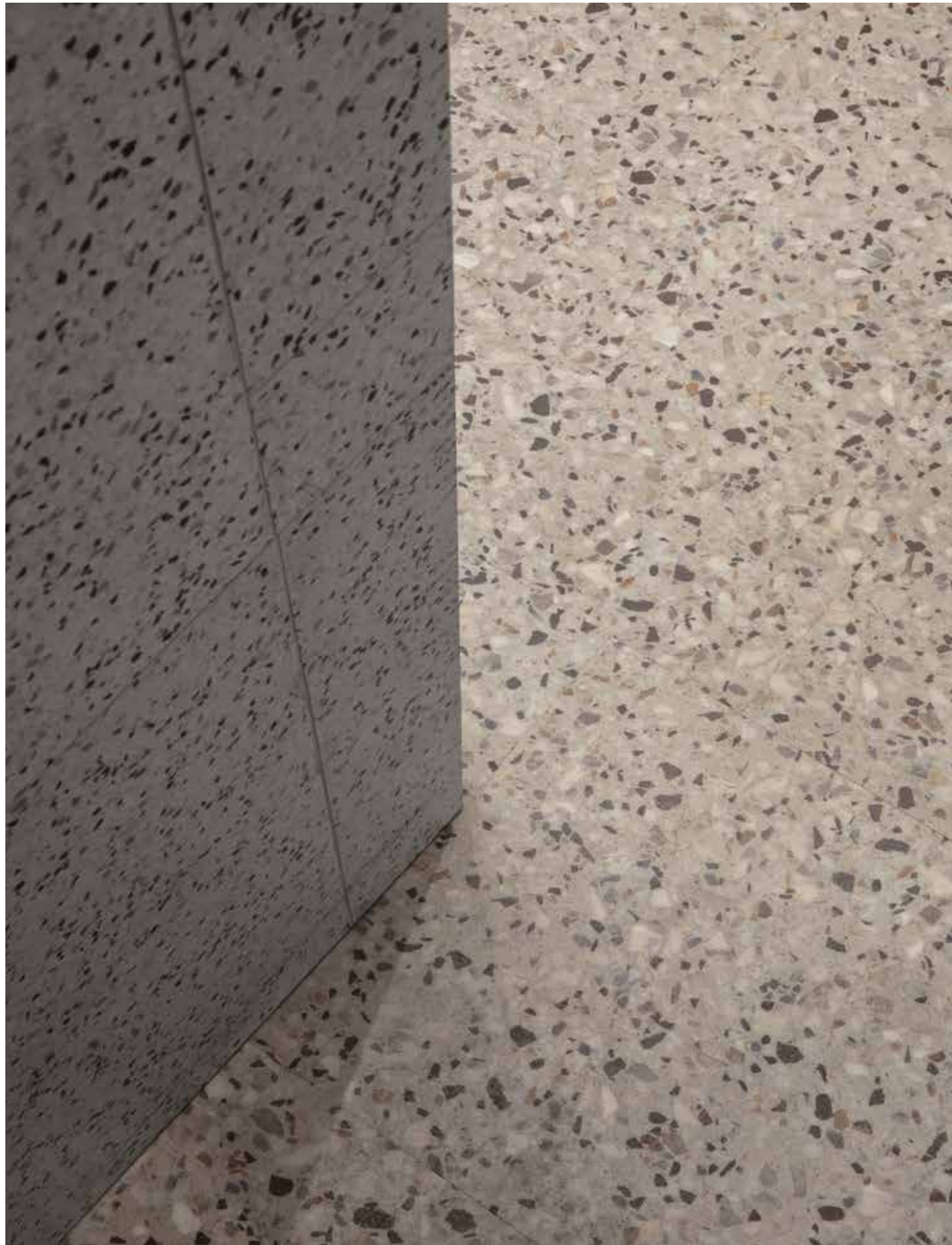
Open Fragments in Ivory, ashlar installation

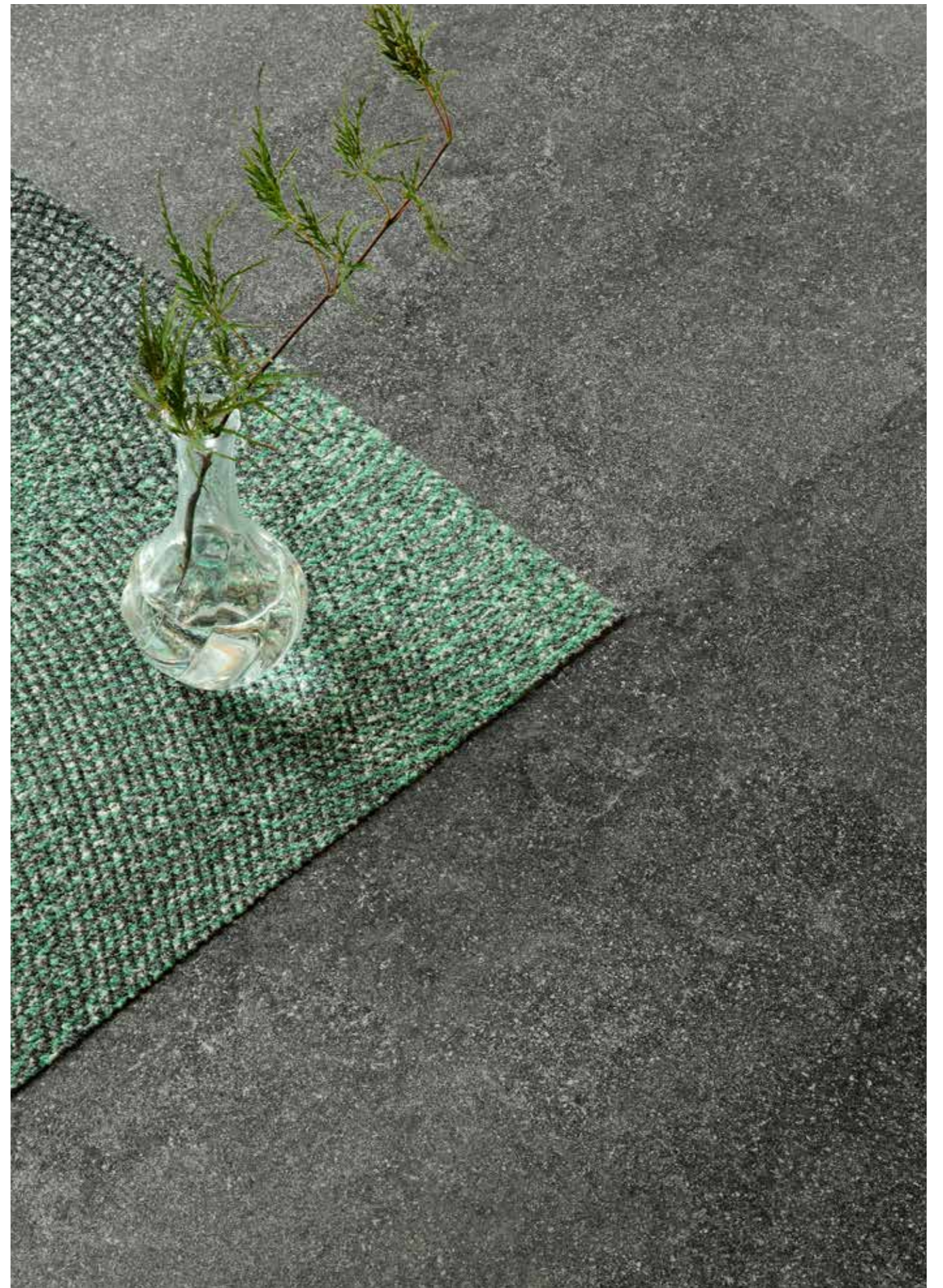


Close Fragments



Close Fragments in Silver, ashlar installation









COLORLINE - Made of Wood



HAT217 HIGH ALIGNMENT/Ivory



HAT220 HIGH ALIGNMENT/Khaki



GDK211 GOLDEN OAK/Tan



GDK259 GOLDEN OAK/Taupe



SAL219 SOFT ALIGNMENT/Cream



GDK204 GOLDEN OAK/Beige



SAL206 SOFT ALIGNMENT/Dark Beige



HAT176 HIGH ALIGNMENT/Brown



GDK251 GOLDEN OAK/Sand



HAT121 HIGH ALIGNMENT/Caramel



HAT210 HIGH ALIGNMENT/Honey



GDK233 GOLDEN OAK/Chocolate



GUN251-219-217 GUNNISON/Cream



GUN121-204-220 GUNNISON/Beige



GUN210-206-211 GUNNISON/Tan



GUN233-176-259 GUNNISON/Brown

COLORLINE - Made of Stone



DSC220 DUST CRYSTALS/Shell



PSL219 PURE SLAB/Dove



PSL208 PURE SLAB/Ash



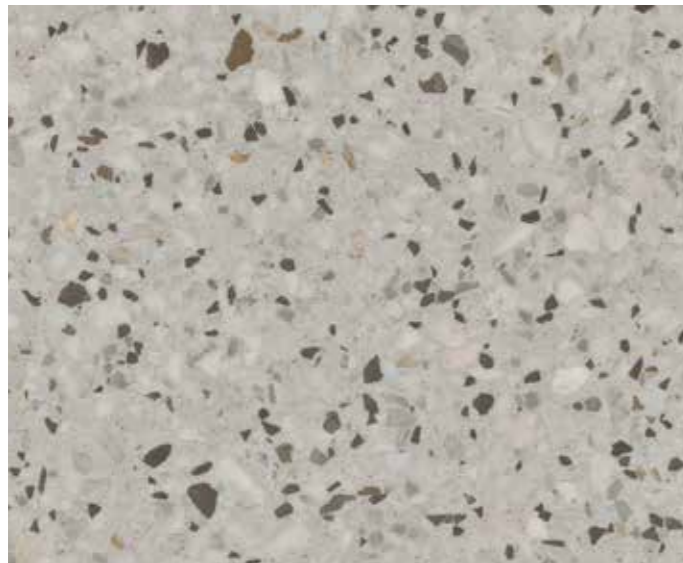
CLF209-215 CLOSE FRAGMENTS/Beige



PSL217 PURE SLAB/Taupe



DSC209 DUST CRYSTALS/Storm



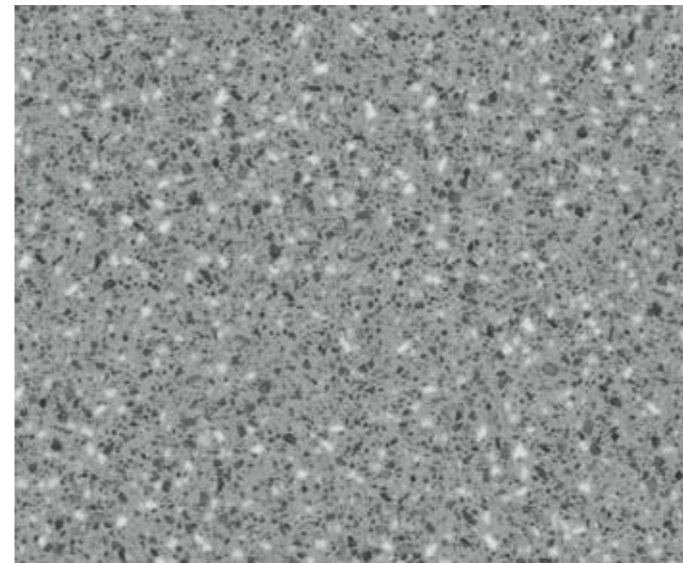
OPF250-217 OPEN FRAGMENTS/Chrome



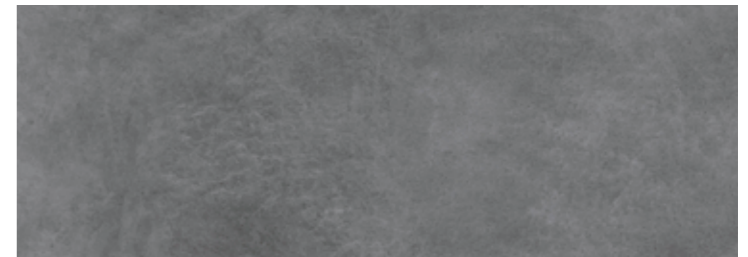
FIG218 FINE GRAIN/Smoke



DSC250 DUST CRYSTALS/Dusk



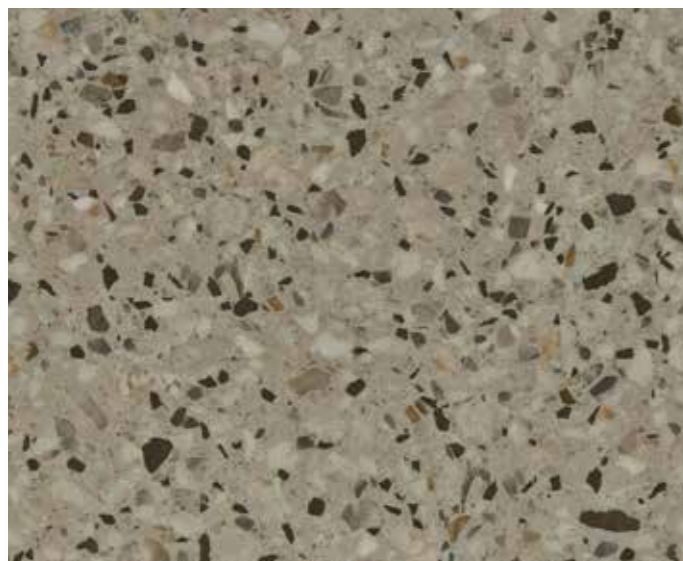
CLF13-209 CLOSE FRAGMENTS/Silver



PSL153 PURE SLAB/Nickel



FIG13 FINE GRAIN/Jet



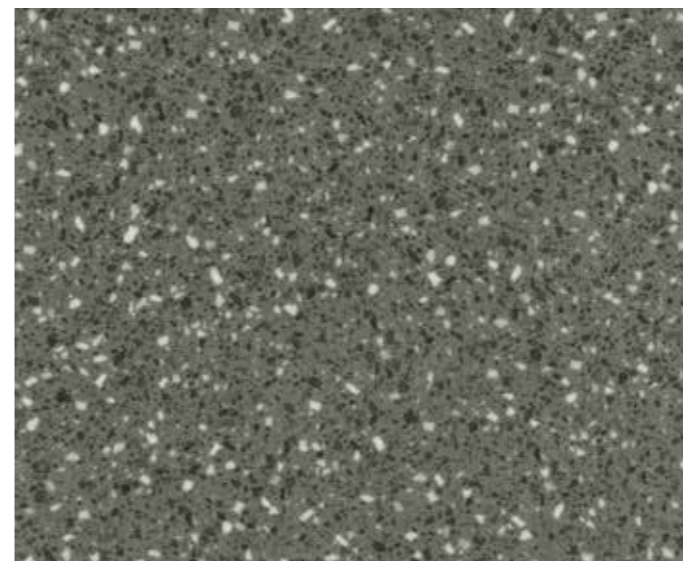
OPF234-208 OPEN FRAGMENTS/Ivory



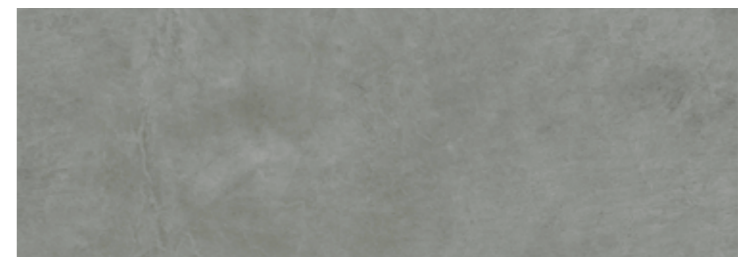
FIG234 FINE GRAIN/Charcoal



DSC120 DUST CRYSTALS/Night



CLF250-165 CLOSE FRAGMENTS/Dim

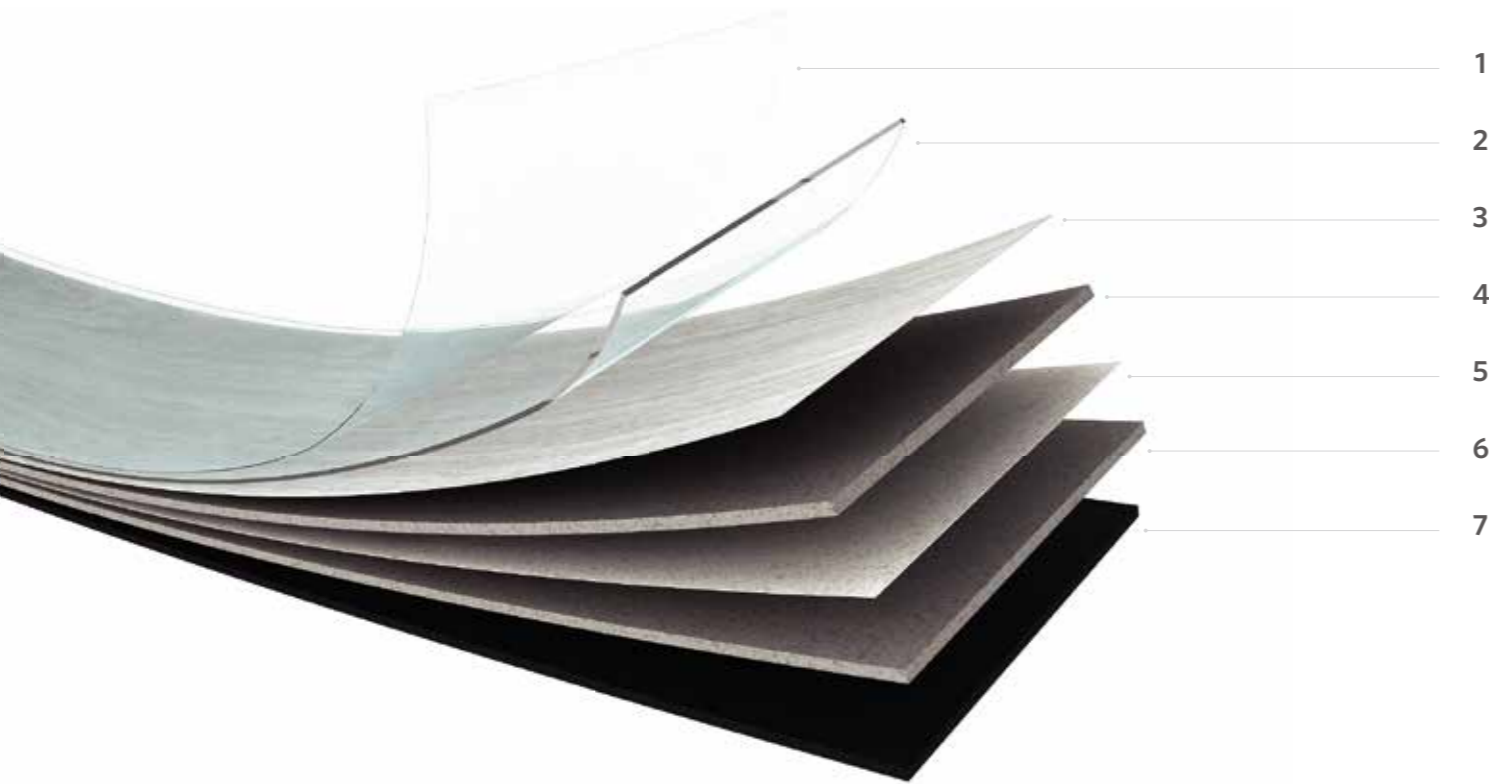


PSL250 PURE SLAB/Cloud



FIG250 FINE GRAIN/Platinum

FLEXFORM™ LVT CONSTRUCTION



OVERALL THICKNESS
5mm

WEAR LAYER THICKNESS
0.55 mm

- 1. PROGUARD™ REINFORCED POLYURETHANE COATING**
Integrated surface technology provides best in class scratch & stain resistance, eliminates the need for additional finishes or harsh chemical treatments.
- 2. 0.55MM TRANSPARENT WEAR LAYER**
Heavy commercial grade 0.55mm transparent wear layer protects the print visuals and ensures product performs in heavy foot traffic.
- 3. DESIGN PHOTOGRAPHIC FILM**
State of the art printing technology providing authentic visuals and designs.
- 4. HIGH DENSITY CORE**
Ensures excellent durability, stability and long term performance.
- 5. GLASS FIBER LAYER**
Supports dimensional stability.
- 6. HIGH DENSITY CORE**
Ensures excellent durability, stability and long term performance.
- 7. VINYL BACKING LAYER**
Engineered balance layer provides stability and durability of the product.

FLEXFORM™ LVT that works Easier and Smarter



SUSTAINABILITY

In keeping with Milliken's long-standing culture of sustainability, our Luxury Vinyl Tile products are 100% Ortho-Phthalate free. They do not contain problematic post-consumer recycled material. Further, Milliken's Luxury Vinyl Tiles are certified to the most stringent global environmental standards.

For further information, visit:

millikenfloors.com/sustainability



WARRANTY

Milliken Luxury Vinyl Tile products are backed by a 15 year Heavy Commercial warranty, ensuring quality and giving peace of mind.



ENHANCED INVENTORY PROGRAM

With an enhanced inventory level for large installations containing select patterns and colors, Milliken's Asia based inventory system makes it easy to respond as quickly as possible to your project needs.

Naturally safe...



GREENGUARD Certification are scientifically proven to meet some of the world's most rigorous, third-party chemical emissions standards, helping to reduce indoor air pollution and the risk of chemical exposure, while aiding in the creation of healthier indoor environments.

Declare.

Declare is a transparency platform and product database that is changing the materials marketplace. Declare products that are "LBC Red List Free" or "LBC Red List Approved", have been approved as compliance pathways for the International WELL Building Standard, emphasizing healthy material selection to minimize risks.



FloorScore® is the most recognized indoor air quality (IAQ) certification standard for hard surface flooring materials, adhesives, and underlayments.



Milliken LVT products are all certified 100% free of ortho-phthalate chemicals.



MIXED FORMATIONS

FLEXFORM™ LVT

SPECIFICATION

Construction

High Performance FLEXFORM™ LVT

Finish

ProGuard™ Reinforced Polyurethane Coating

Overall Thickness

5mm

Wear Layer Thickness

0.55mm

Edge Profile

Micro Bevel

Tile Sizes

7.25" x 48" (184.15mm x 1219.2mm)

9" x 60" (228.6mm x 1524mm)*

18" x 36" (457.2mm x 914.4mm)^

Weight Per Box

21.9kg/20.54kg*/24.52kg^

Quantity Per Box

2.25m²/2.09m²*/2.51m²^

Critical Radiant Flux (ISO 9239-1)

≥4.5kW/m²

Smoke Rate (ISO 9239-1)

<750%.min

Use Classification (ISO 10582)

Class 33 Heavy Commercial

Colour Fastness to Light (ISO 105-B02)

≥6

Slip Resistance (DIN 51130)

R10

Dimensional Stability (ISO 23999)

≤0.25 % ; Curl ≤2 mm

Resistance to Chemicals (ASTM F925)

Pass

Residual Indentation (ISO 24343-1)

≤0.1 mm

Castor Chair Resistance (ISO 4918)

Pass

Flexibility (ISO 24344)

Pass

Warranty

15 Year Limited Commercial Wear Warranty

产品结构

高级弹性地材

表层工艺

ProGuard™ 增强聚氨酯涂层

总厚度

5mm

耐磨层厚度

0.55mm

倒角类型

微倒角

单片尺寸

7.25" x 48" (184.15 毫米 x 1219.2 毫米)

9" x 60" (228.6 毫米 x 1524 毫米)*

18" x 36" (457.2 毫米 x 914.4 毫米)^

每箱重量

21.9kg/20.54kg*/24.52kg^

每箱数量

2.25m²/2.09m²*/2.51m²^

临界辐射通量 (阻燃性) (ISO 9239-1)

≥4.5kW/m²

产烟量 (ISO 9239-1)

<750%.min

应用分级 (ISO 10582)

商业重度 33 级

光照色牢度 (ISO 105-B02)

≥6

防滑性能 (DIN 51130)

R10

加热尺寸稳定性及翘曲 (ISO 23999)

≤0.25 % ; 翘曲 ≤2 mm

耐化学性能 (ASTM F925)

通过

残余凹陷 (ISO 24343-1)

≤0.1 mm

脚轮椅测试 (ISO 4918)

通过

柔韧性 (ISO 24344)

通过

质保

15 年商用耐磨层有限质保

* For Gunnison Pattern

^ For Made of Stone Pattern

LVT ENVIRONMENTAL STANDARDS

Milliken LVT is highly durable resilient flooring engineered with the highest quality raw materials to provide unsurpassed performance and enduring aesthetics. Milliken LVT is 100% ortho-phthalate-free. Milliken LVT is manufactured at facilities that are ISO 9001 and ISO 14001 compliant.



Declare



Specifications are subject to normal manufacturing tolerances and may be changed without prior notice. Images in this brochure are approximate for color and pattern scale. Please use actual product samples to make your final selections.

China

Beijing / Tianjin

T +86 10 6465 1206

Hong Kong

T +852 3956 2259

Shaanxi

T +86 181 1702 5160

Guangzhou

T +86 189 2279 2198

Shenzhen

T +86 181 1603 8035 /

+86 181 1624 5737

Shanghai / Zhejiang / Jiangsu /

Hunan / Hubei / Jiangxi / Anhui /

Sichuan / Chongqing

T +86 21 6145 1758

India

Bangalore

T +91 98459 14059

Chennai

T +91 98408 98963

Delhi

T +91 88514 12740

Mumbai

T +91 98926 00362

Rest of Asia

Manila

T +63 915 816 7127

Seoul

T +82 2 3783 0747

Singapore

T +65 6593 1301

Tokyo

T +81 3 5203 8406

Jakarta

T +6221 2960 7222