

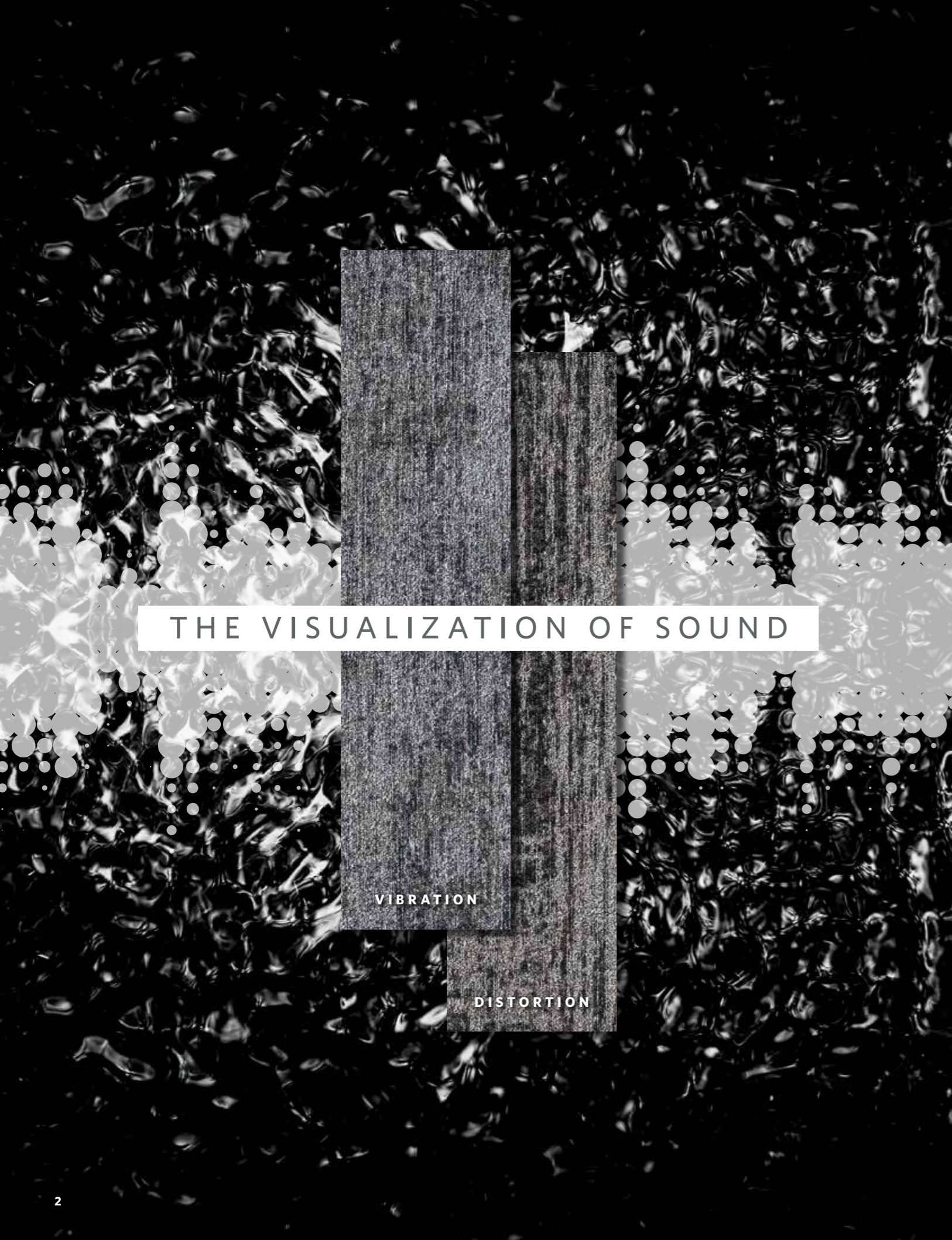
Vibration

Distortion

**MAJOR
FREQUENCY:
ONE**

Vibration / Distortion

Milliken[®]



THE VISUALIZATION OF SOUND

VIBRATION

DISTORTION



Distortion in Tremor DTN209-118. 25cm x 1m planks. Vertical ashlar.

Sound can beckon to the core of our emotions. What begins as a singular wave can multiply and curiously sync together, eventually inciting a poignant experience within each of us.

Introducing Major Frequency: One, the first wave in a series of inspiration rooted in the realization of sound's power. Through two organic patterns expressed in 13 unhindered color options, this collection explores the possibilities that exist within raw and unencumbered cymatics.

MAJOR FREQUENCY: ONE

VIBRATION

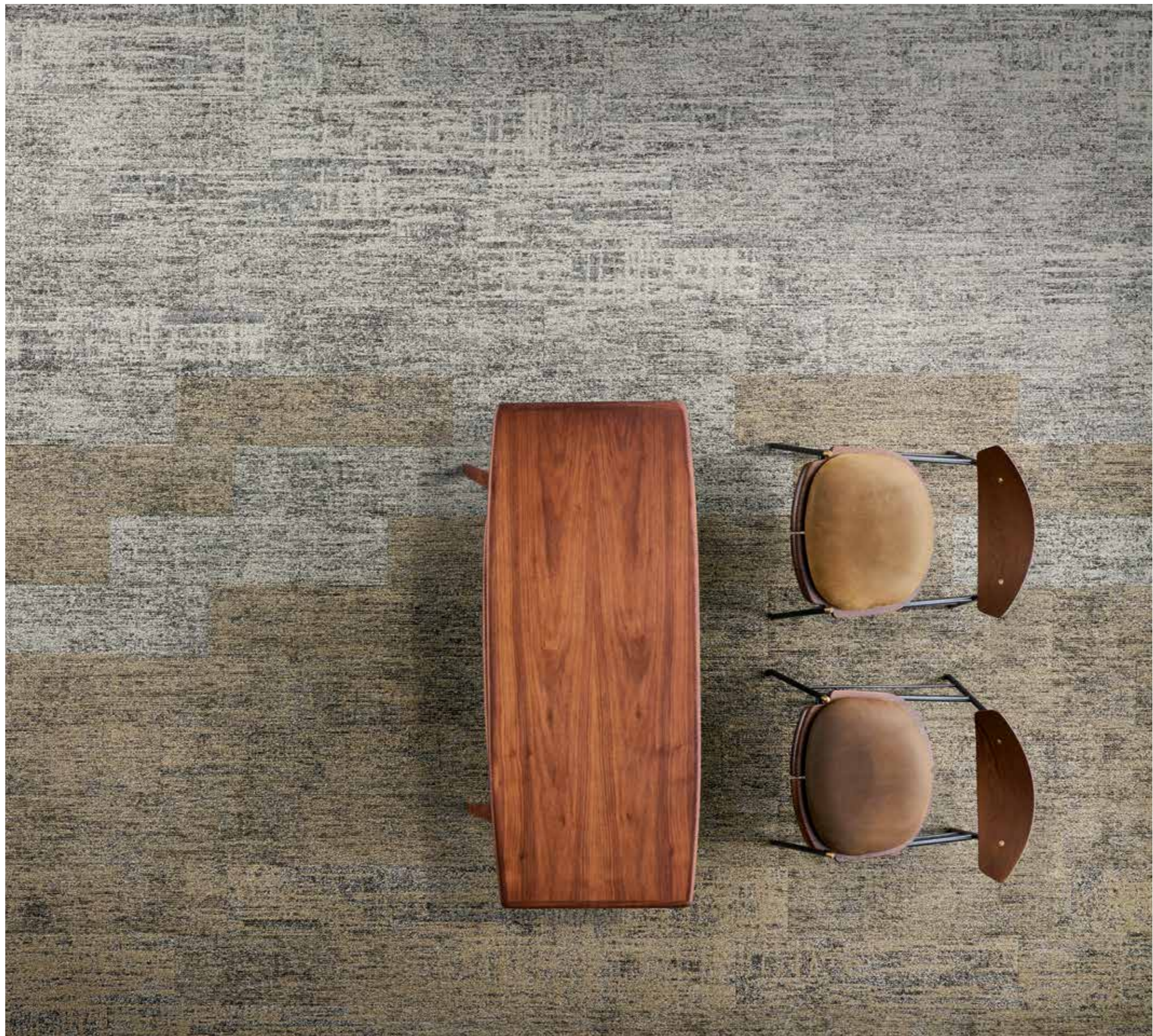
Stippled and robust, Vibration harnesses a finer, more saturated vitality.

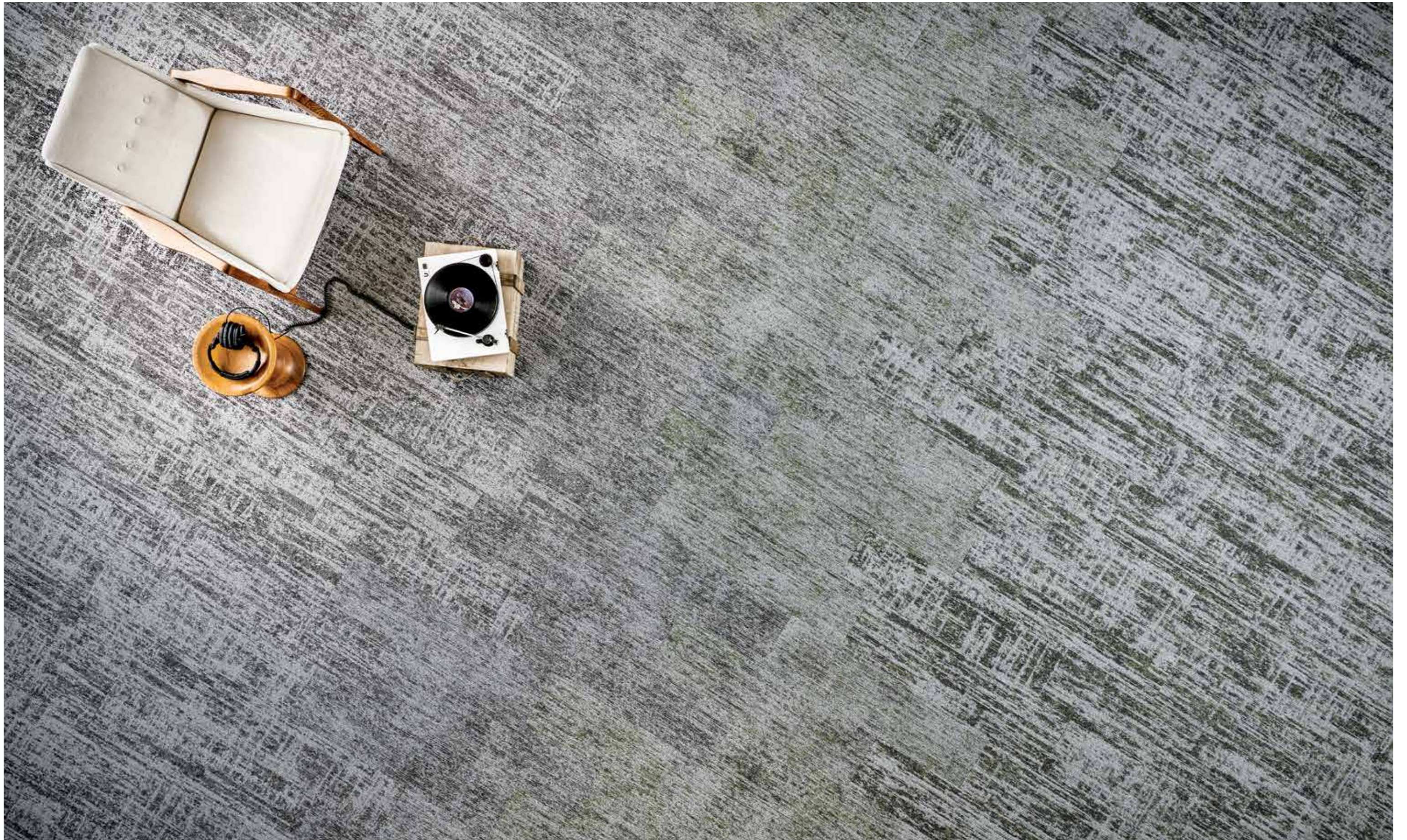


DISTORTION

A second perspective, Distortion expresses a slightly larger, yet more diluted flow within positive and negative space.



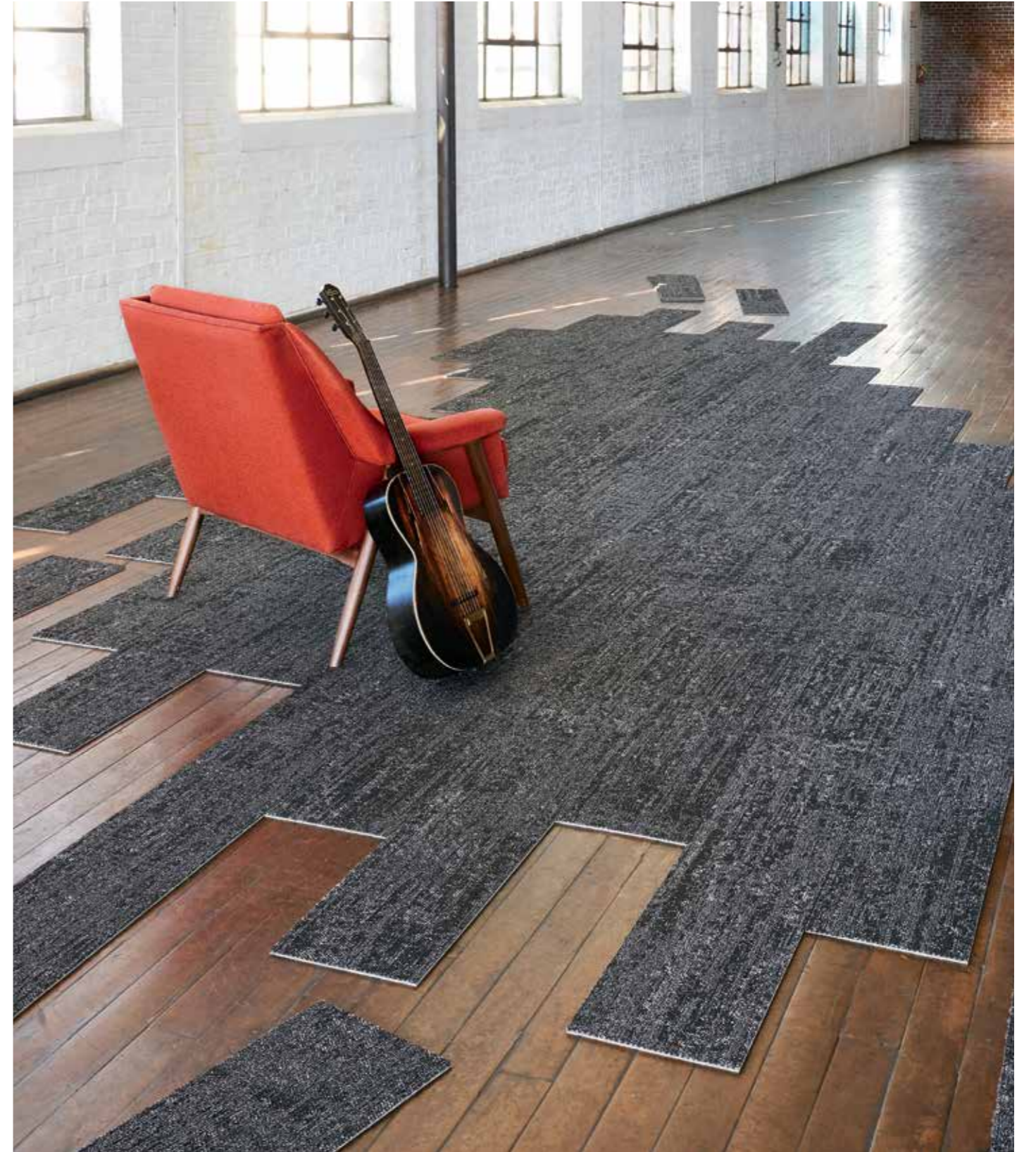




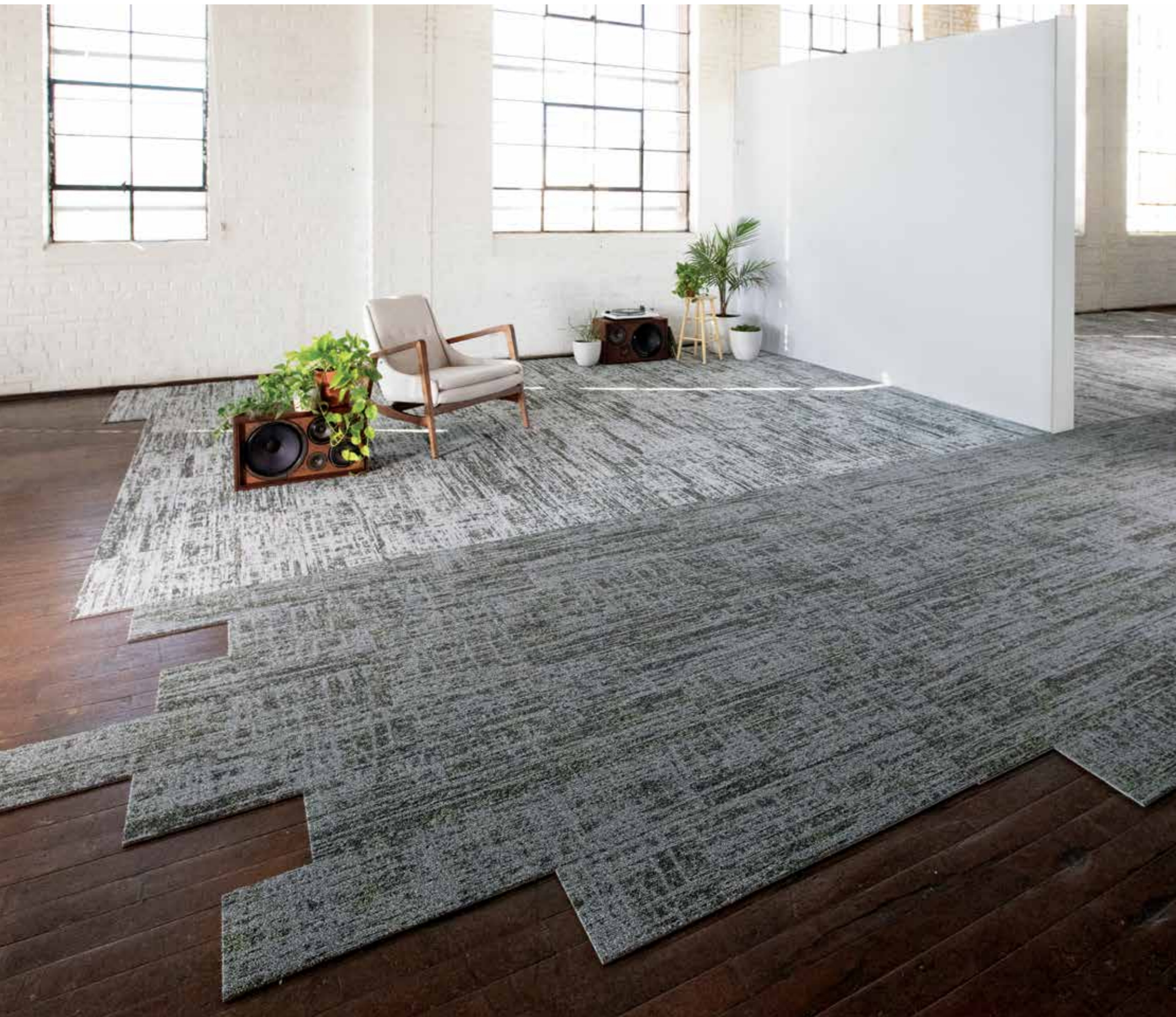
(Left to right) Distortion in Tremor DTN209-118. Vibration in Tremor VBN209-118. Vibration in Rustle VBN141-79-209. Distortion in Rustle DTN141-79-209. 25cm x 1m planks. Vertical ashlar.



FIND THE HUE THAT MOVES YOU.
Visualize now at [MillikenFloors.com](https://www.MillikenFloors.com)





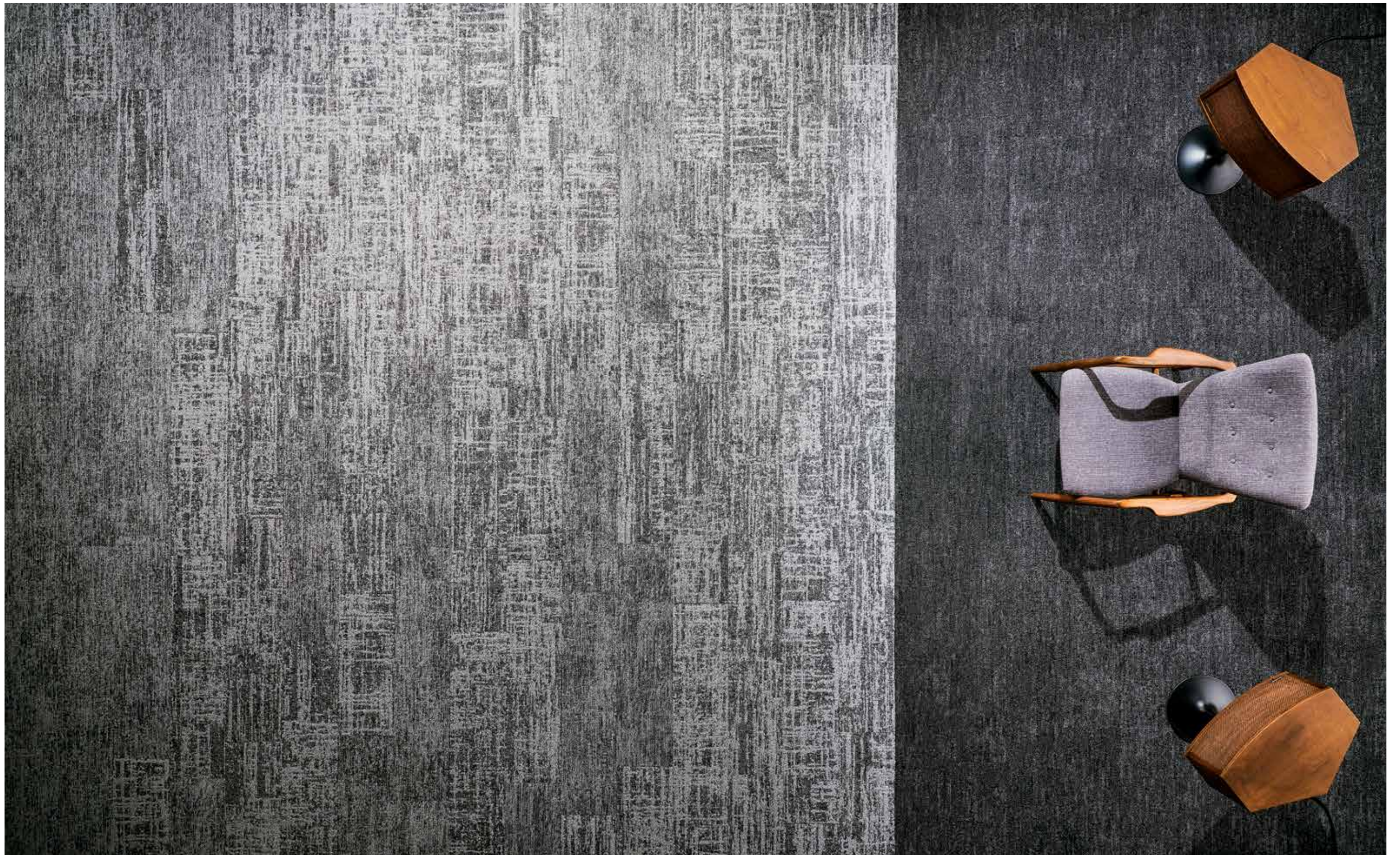


18 (Back to front) Distortion in Rustle DTN141-79-209. Distortion in Quake DTN141-118-106. 25cm x 1m planks. Vertical ashlar.



Vibration in Strident VBN79-152. 25cm x 1m planks. Vertical ashlar. 19







COLOR LINE IN VIBRATION



VBN218-106
PERCEIVE



VBN209-118
TREMOR



VBN94-27-217
BUZZ



VBN183-118-152
INTERFERENCE



VBN94-211-212
CRESCENDO



VBN79-152
STRIDENT



VBN27-118
STATIC



VBN141-118-106
QUAKE



VBN211-27-217
OVERTONE



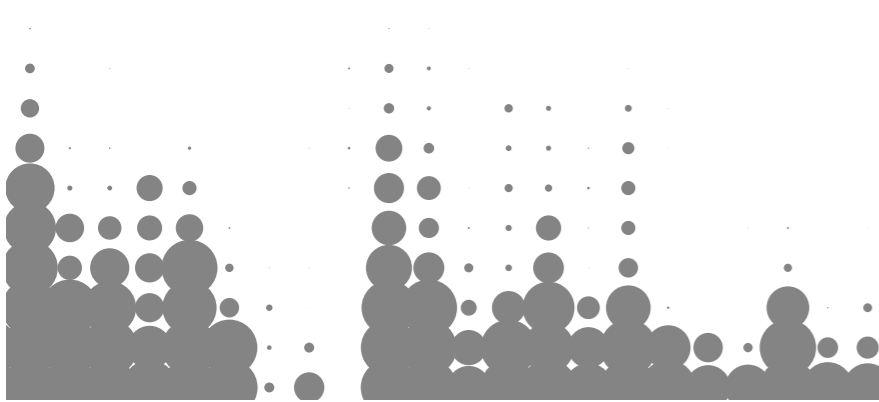
VBN27-152
FLUX



VBN60-79-27
RUCKUS



VBN190-79-152
CLAMOR



(These images are only for color reference)

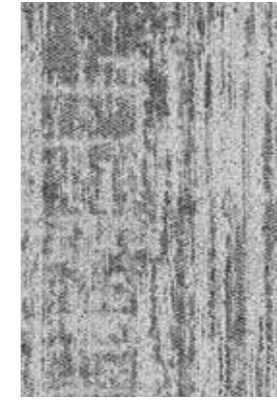


VBN141-79-209
RUSTLE

COLOR LINE IN DISTORTION



DTN218-106
PERCEIVE



DTN209-118
TREMOR



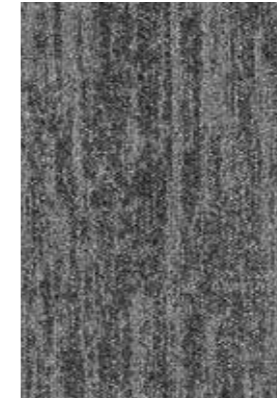
DTN94-27-217
BUZZ



DTN183-118-152
INTERFERENCE



DTN94-211-212
CRESCENDO



DTN79-152
STRIDENT



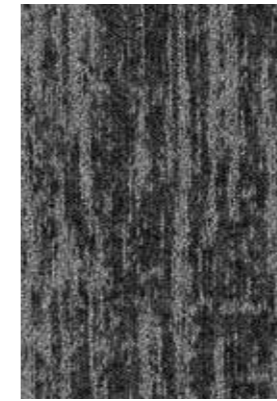
DTN27-118
STATIC



DTN141-118-106
QUAKE



DTN211-27-217
OVERTONE



DTN27-152
FLUX



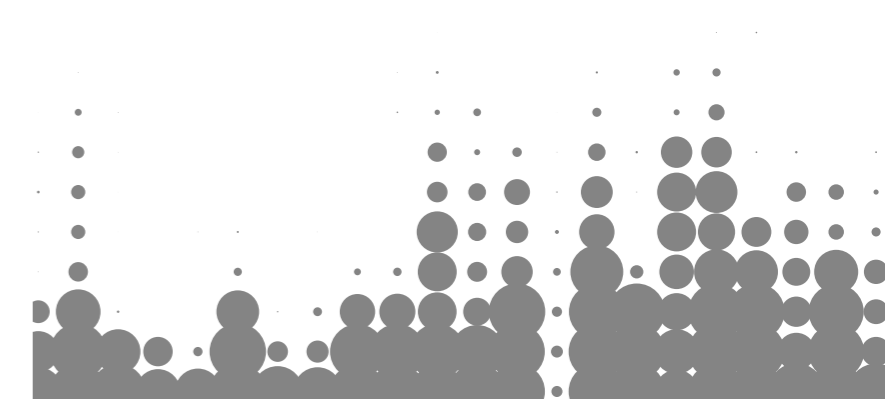
DTN60-79-27
RUCKUS



DTN190-79-152
CLAMOR



DTN141-79-209
RUSTLE



(These images are only for color reference)

STYLE BACKED BY PERFORMANCE

Milliken Floor Covering offers products and expertise in all areas of your commercial spaces, including high-performance entryway systems, modular and broadloom carpet, luxury vinyl tile and milliCare®. Simplify your flooring projects by working with a trusted partner that lets you focus on enjoying the process of creating a great space.





MULTI-TILE DESIGNS

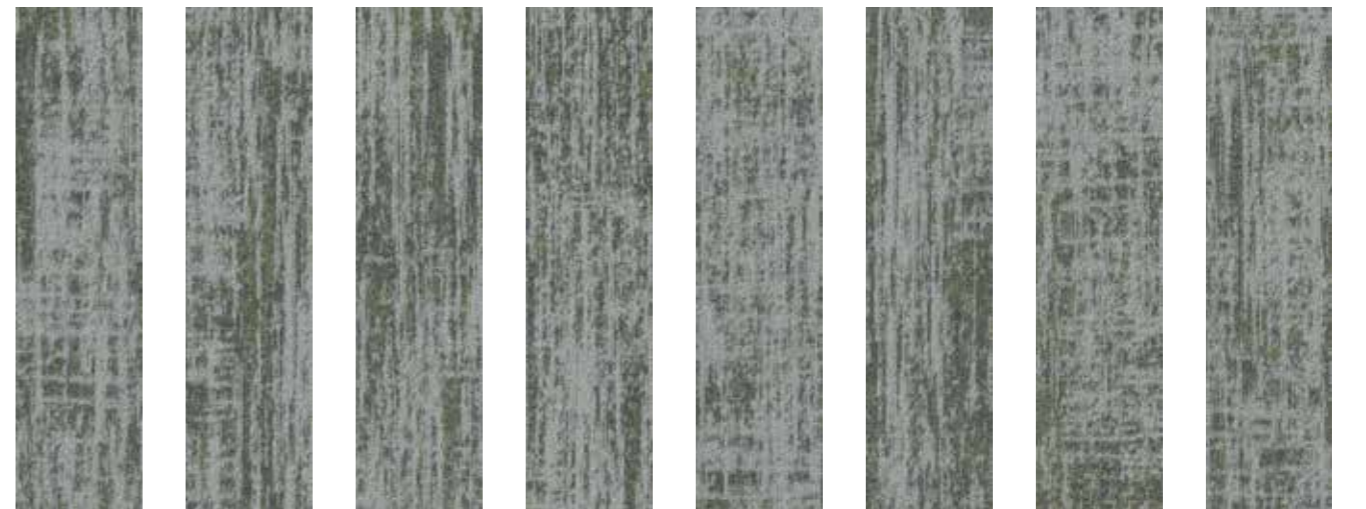
The Major Frequency: One designs are multi-tile designs.
Orders will ship as a randomised assortment of all elements.

Vibration



VBN141-79-209
RUSTLE

Distortion



DTN141-79-209
RUSTLE



Major Frequency: One

Vibration / Distortion

SPECIFICATION

- Construction** - Tufted, Textured Loop
- Tile Size** - 25cm X 100cm
- Face Fiber** - 100% Milliken Certified Nylon
- Dye Method** - Solution Dyed
- Standard Backing** - PVC-Free WellBAC™ Comfort
Available with TractionBack®
- Nominal Total Thickness** - 8.4 mm AVG.(Vibration)
8.6 mm AVG.(Distortion)
- Antimicrobial** - AlphaSan®AF Built-In Protection
- Flammability** - ≥ 0.45 (Class I)
- Texture Appearance Retention Rating (TARR)** - Severe
- Indoor Air Quality - CRI Green Label Plus™**
GLP100130, Carpet Category 13X

技术指标

- 结构** - 簇绒织造圈绒结构
- 产品尺寸** - 25厘米 X 100厘米
- 表层纤维** - 100% 美利肯认证尼龙
- 染色技术** - 原液染色
- 标准底垫** - 不含PVC之 WellBAC™ Comfort舒适软底
可选装TractionBack® 免胶
- 额定总厚度** - 8.4 毫米 平均(Vibration)
8.6 毫米 平均(Distortion)
- 抗菌工艺** - AlphaSan® 内置保护
- 阻燃性** - ≥ 0.45 (一级)
- 外观保持等级 (TARR)** - 重度商业使用
- 室内空气质量 CRI Green Label Plus™** - GLP100130, 地毯类别 13X

Installation Method:

安装方式



Planks
板条安装

TractionBack®

Simplify your modular installation with Milliken's patented TractionBack®, an innovative backing system that is faster, more cost efficient, and environmentally superior to wet adhesives and peel-and-stick carpet tile.

www.millikencarpet.com



Declare.

China
Beijing / Tianjin
T +86 10 6465 1206
Hong Kong
T +852 3956 2259
Shaanxi
T +86 181 1702 5160
Guangzhou
T +86 189 2279 2198
Shenzhen
T +86 181 1603 8035 /
+86 181 1624 5737
Shanghai / Zhejiang / Jiangsu /
Hunan / Hubei / Jiangxi / Anhui /
Sichuan / Chongqing
T +86 21 6145 1758

India
Bangalore
T +91 98459 14059
Chennai
T +91 98408 98963
Delhi
T +91 88514 12740
Mumbai
T +91 98926 00362

Rest of Asia
Manila
T +63 915 816 7127
Seoul
T +82 2 3783 0747
Singapore
T +65 6593 1301
Tokyo
T +81 3 5203 8406
Jakarta
T +6221 2960 7222