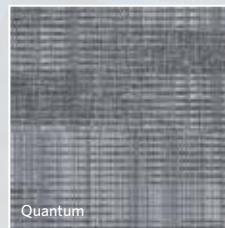
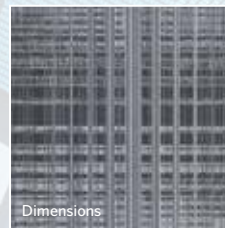


Invisible Field



Quantum



Dimensions



## MOMENTUM 2.0

Invisible Field / Quantum / Dimensions

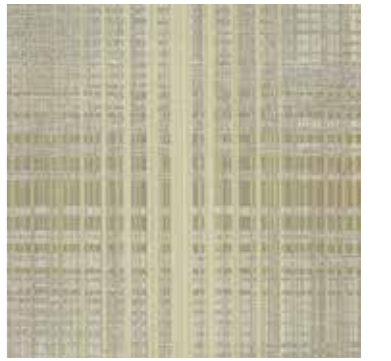
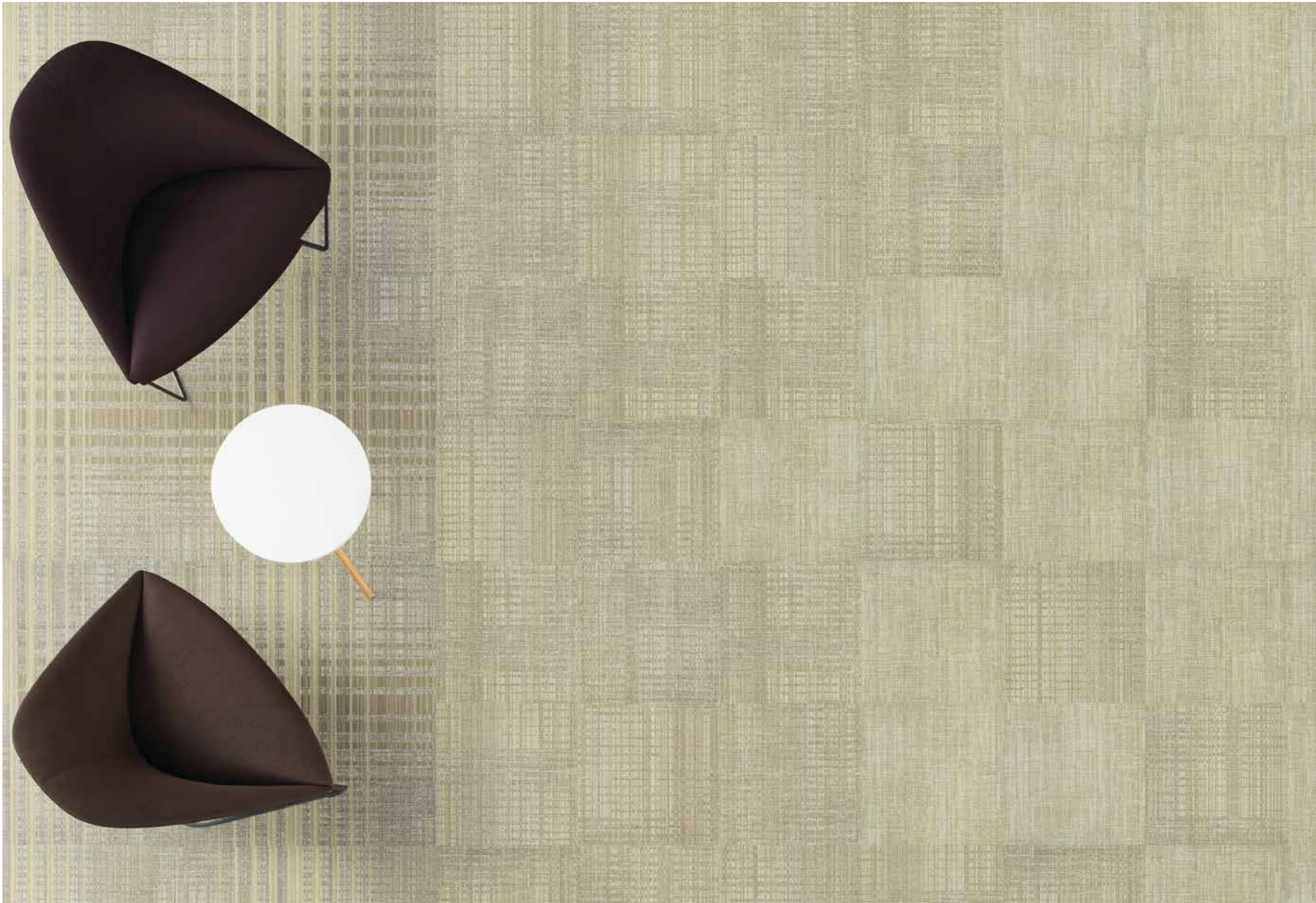
*Milliken*

A futuristic, symmetrical tunnel with a grid floor and glowing lights. The perspective is from the center, looking down a long, narrow passage. The floor is a dark, textured grid that recedes into the distance. The walls are dark and reflective, with bright, glowing light strips running along the top and bottom edges. The ceiling is also dark, with a series of glowing, cylindrical light fixtures hanging from it. The overall atmosphere is clean, modern, and high-tech.

## INSPIRED. INSPIRING.

“Nothing happens until something moves” Albert Einstein.

Ideas, preparation, knowledge, and wisdom are all but useless without action, because action is the starting point of all progress. Moving and action builds the fundamental laws of change. The Momentum 2.0 collection explores this beauty of movement. 3 different scaled patterns transitioning from Invisible Field, Quantum to Dimensions... Create your movement on the floor with Momentum 2.0 Collection.



**Dimensions**  
DIM48-81 LIGHT



**Quantum**  
QUA48-81 LIGHT



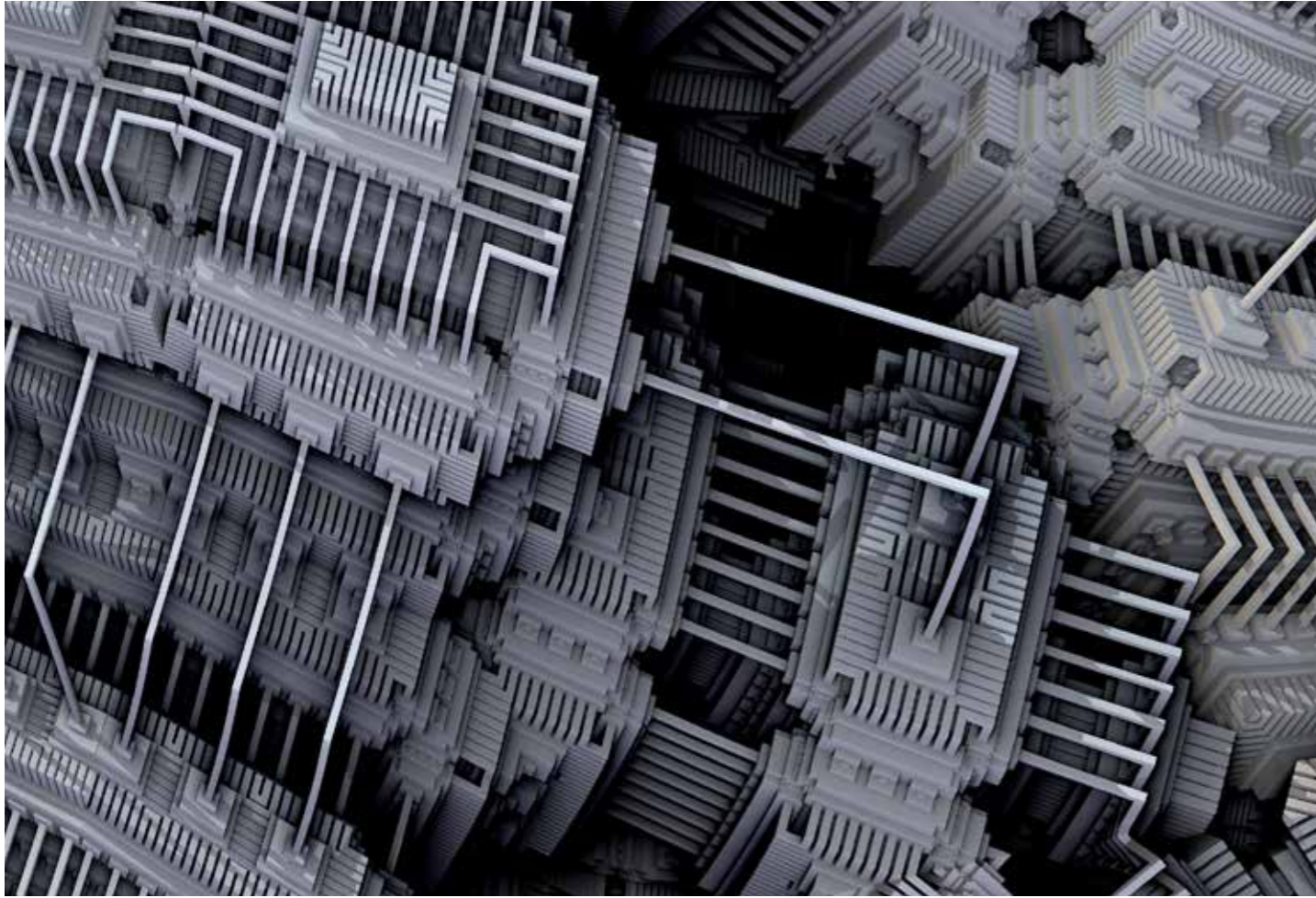
**Invisible Field**  
IVF48-81 LIGHT

Invisible Field, Quantum and Dimensions in *Light*, monolithic installation

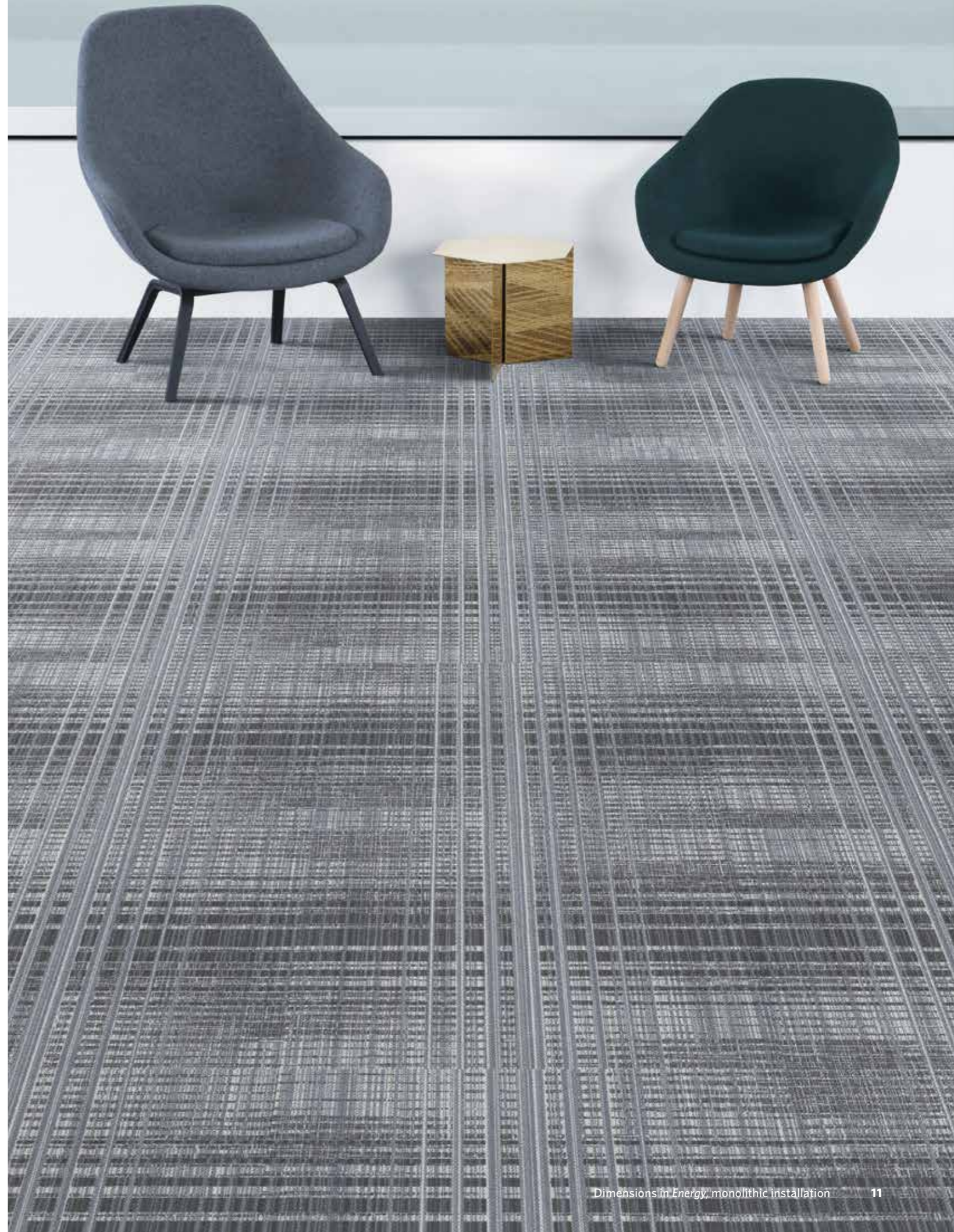
INVISIBLE FIELD

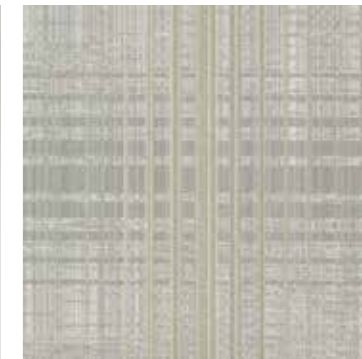


QUANTUM



**DIMENSIONS**



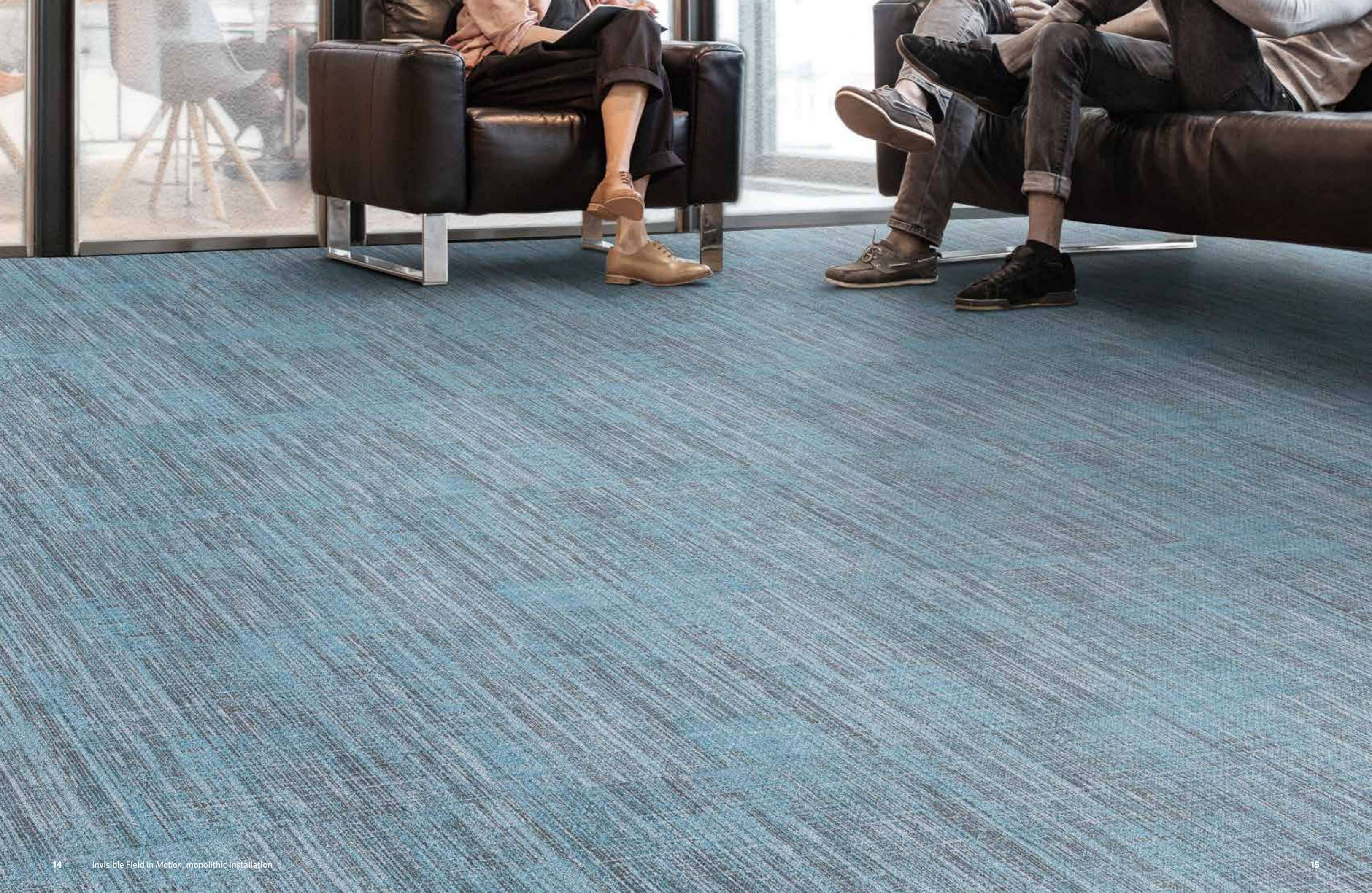


**Dimensions**  
DIM207-108 UNIT



**Invisible Field**  
IVF207-108 UNIT

(Inside to outside) Dimensions, Invisible Field in *Unit*, monolithic installation







# COLORLINE

## Invisible Field 50CMx 50CM



**IVF207-208**  
UNIT

## Quantum\* 50CMx 50CM



**QUA207-208**  
UNIT



**IVF48-81**  
LIGHT



**QUA48-81**  
LIGHT



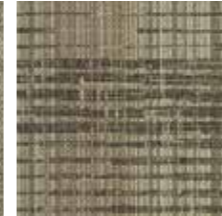
**IVF207-234**  
WARM ATOM



**QUA207-234**  
WARM ATOM



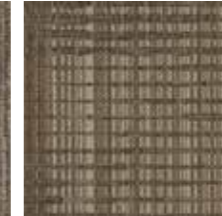
**IVF251-254**  
DARK MASS



**QUA251-254**  
DARK MASS



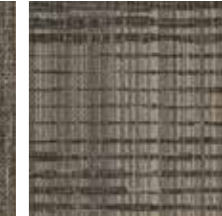
**IVF204-82**  
WARM PARTICLE



**QUA204-82**  
WARM PARTICLE

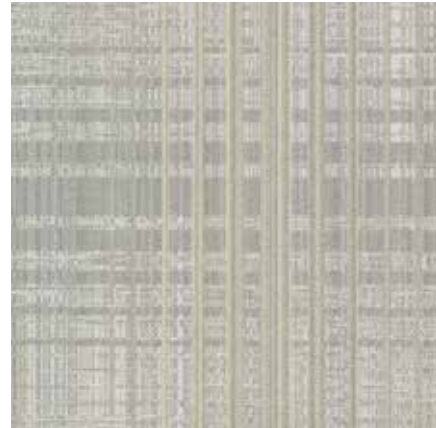


**IVF119-212**  
WARM VELOCITY

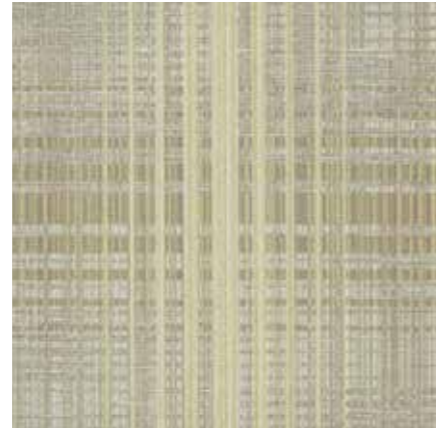


**QUA119-212**  
WARM VELOCITY

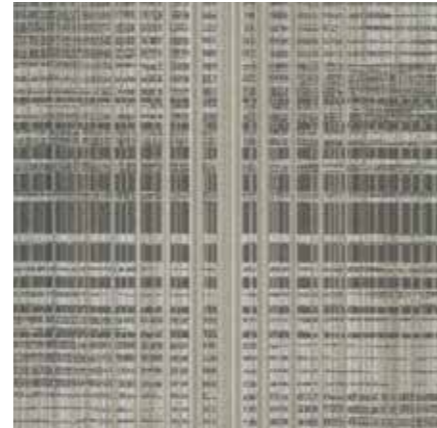
## Dimensions 100CM x 100CM



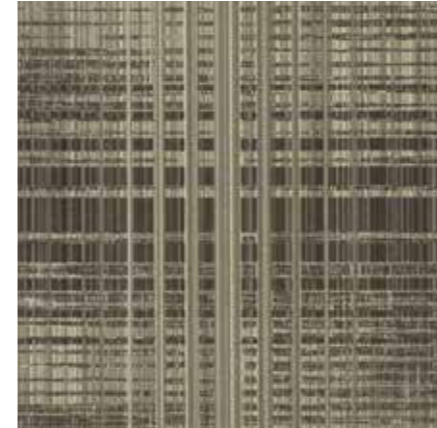
**DIM207-208** UNIT



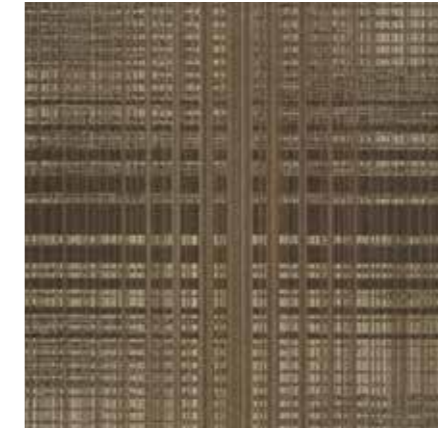
**DIM48-81** LIGHT



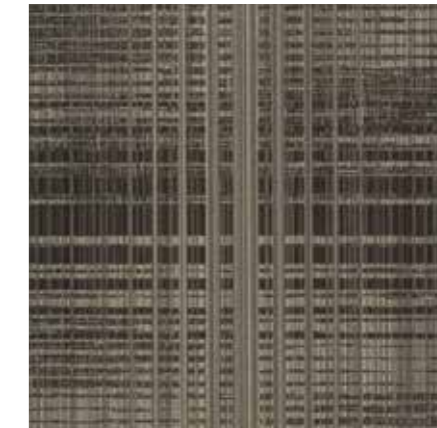
**DIM207-234** WARM ATOM



**DIM251-254** DARK MASS



**DIM204-82** WARM PARTICLE



**DIM119-212** WARM VELOCITY



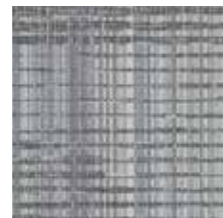
**IVF219-153**  
LIGHT SPEED



**QUA219-153**  
LIGHT SPEED



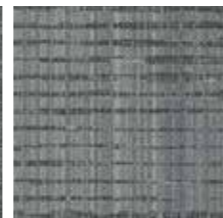
**IVF209-174**  
ENERGY



**QUA209-174**  
ENERGY



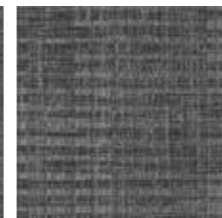
**IVF119-13**  
COOL RELATIONS



**QUA119-13**  
COOL RELATIONS



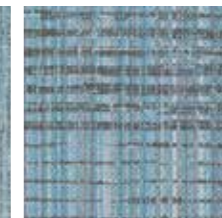
**IVF174-27**  
COOL GRAVITY



**QUA174-27**  
COOL GRAVITY



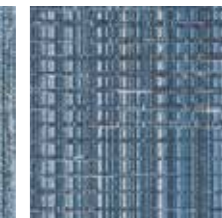
**IVF13-140**  
MOTION



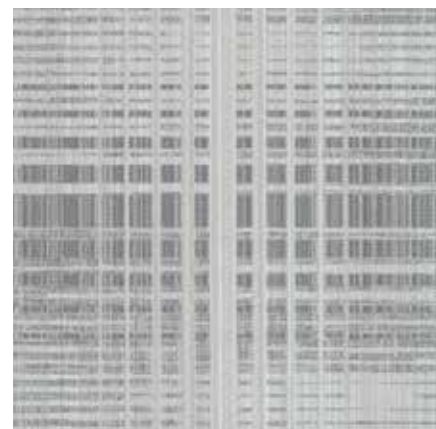
**QUA13-140**  
MOTION



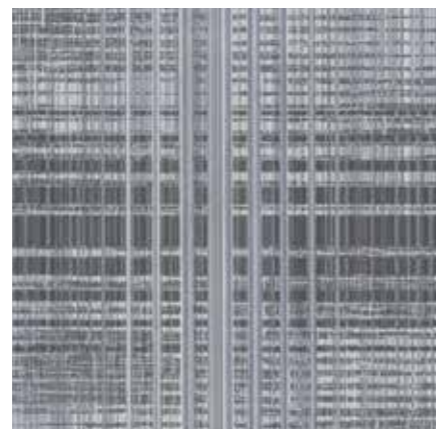
**IVF182-157**  
LIGHT ELECTRON



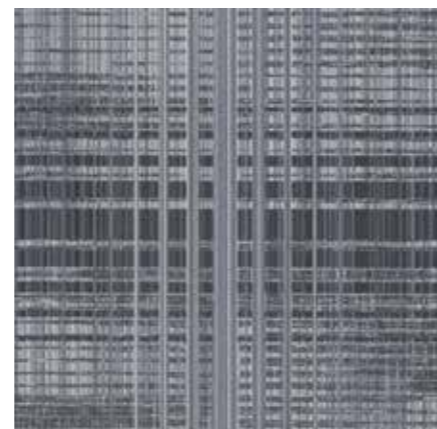
**QUA182-157**  
LIGHT ELECTRON



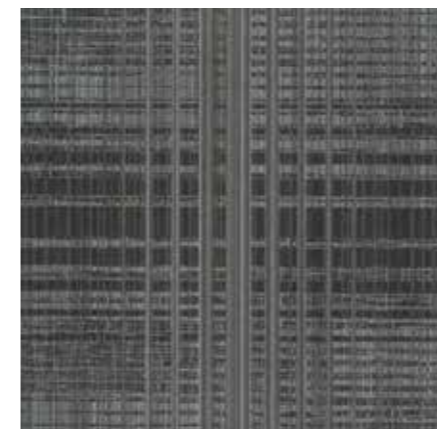
**DIM219-153** LIGHT SPEED



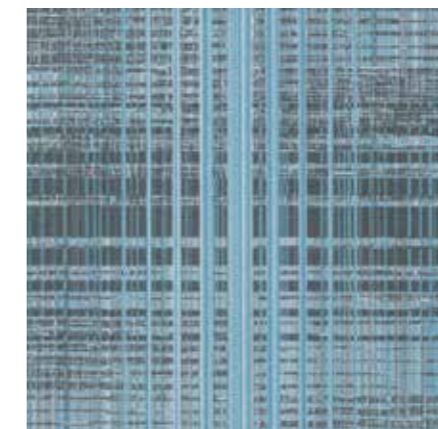
**DIM209-174** ENERGY



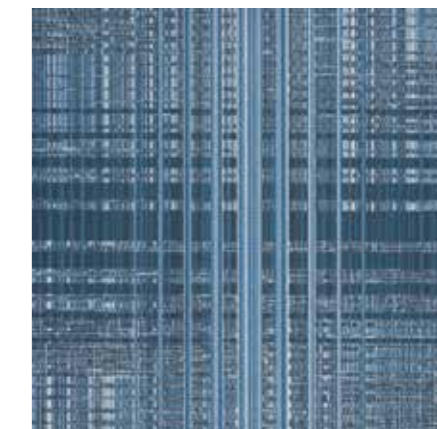
**DIM119-13** COOL RELATIONS



**DIM174-27** COOL GRAVITY



**DIM13-140** MOTION



**DIM182-157** LIGHT ELECTRON

\* Quantum pattern has two different size tile, 50CM x 50CM and 100CM x 100CM, above colorline shows 50CM x 50CM.



# Momentum 2.0

Invisible Field / Quantum / Dimensions

## SPECIFICATION

**Construction** - Tufted, Textured Loop

**Tile Size** - 50cm X 50cm for Invisible Field and Quantum  
100cm X 100cm for Quantum and Dimensions

**Face Fiber** - 100% Milliken Certified Nylon

**Dye Method** - Millitron®

**Standard Backing** - PVC-Free WellBAC™ Comfort Plus  
Available with TractionBack®

**Nominal Total Thickness** - 9.8 mm AVG.

**Stain Resist/Soil Release** - StainSmart®

**Flammability** - ≥ 0.45 (Class I)

**Texture Appearance Retention Rating (TARR)** - Severe

**Indoor Air Quality - CRI Green Label Plus™**

GLP3237, Carpet Category 5Y

## 技术指标

**结构** - 簇绒织造圈绒结构

**产品尺寸** - 50厘米 X 50厘米 for Invisible Field and Quantum  
100厘米 X 100厘米 for Quantum and Dimensions

**表层纤维** - 100% 美利肯认证尼龙

**染色技术** - Millitron®电脑数码针染

**标准底垫** - 不含PVC之 WellBAC™ Comfort Plus 高端软底  
可选装 TractionBack® 免胶

**额定总厚度** - 9.8 毫米 平均

**抗污/去污** - StainSmart®

**阻燃性** - ≥ 0.45 (一级)

**外观保持等级 (TARR)** - 重度商业使用

**室内空气质量 CRI Green Label Plus™** - GLP3237, 地毯类别 5Y

## Installation Method

安装方式:



**Monolithic**  
同一方向安装

## TractionBack®

Simplify your modular installation with Milliken's patented TractionBack®, an innovative backing system that is faster, more cost efficient, and environmentally superior to wet adhesives and peel-and-stick carpet tile.

[www.millikencarpet.com](http://www.millikencarpet.com)



**Declare.**

**China**  
North & North West &  
South West Of China  
T +86 10 6465 1206  
T +86 133 0101 8460  
South of China &  
HK & Macau  
T +86 181 1743 0032  
East & Central of China  
T +86 21 6145 1758

**India**  
Bangalore  
T +91 98408 98963  
Delhi  
T +91 95010 11800  
Hyderabad  
T +91 99631 64059  
Mumbai  
T +91 98926 00362

**Rest of Asia**  
Manila  
T +63 915 816 7127  
Seoul  
T +82 2 3783 0747  
Singapore  
T +65 6593 1301  
Tokyo  
T +81 3 5203 8406  
Jakarta  
T +6221 2960 7222